



**BEEF EXPO**

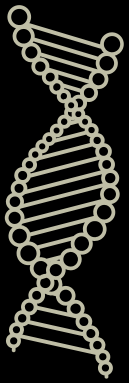
*36th Annual*

**APRIL 9-11, 2026**

**WVU JACKSON'S MILL | WESTON, WV**

**ANGUS | CHAROLAIS | LIMOUSIN**

**POLLED HEREFORD | RED ANGUS | SIMMENTAL**



# MAXIMIZE

THE **POTENTIAL** AND **PROFIT** OF YOUR **GENETICS**



Pleasant View Farm is teaming up with White Oak Veterinary Clinic and Boviteq to offer advanced reproductive services including IVF Aspirations to the Ohio Valley

## WHAT DO WE OFFER

IVF ASPIRATIONS

PREGNANT RECIPIENT PURCHASE OPTIONS

DONOR HOUSING & SYNCHRONIZATION

SEMEN & EMBRYO STORAGE

**Proven. Precision. Performance.**

WHITE OAK AVERAGES 40% DEVELOPMENT AND 8 EMBRYOS PER DONOR

## CONTACT US

### IVF SCHEDULING

#### WHITE OAK VETERINARY CLINIC

236 HIGHPOINT DRIVE

SOMERSET, PA 15501

814-521-5911

### DONOR HOUSING OR RECIPIENT QUESTIONS

#### PLEASANT VIEW FARM

3378 CENTURY ROAD

RAVENSWOOD, WV 26164

DR. MAX MCCOY (304) 834-7791





WEST VIRGINIA  
BEEF EXPO

# Schedule of Events

## Thursday, April 9

8 a.m.-5 p.m.	Delivery of Cattle & Exhibit Set Up
1 p.m.-3 p.m.	Bull Breeding Soundness Exams
6:00 p.m.	WV Hereford Women's Association (EEC)
6:00 p.m.	Exhibitors Barbecue (Multipurpose Building Arena)
	Opening Ceremony
7:00 p.m.	WV Polled Hereford Association Meeting (EEC)
	WV State Livestock Roundup Meeting (Barn Office)

## Friday, April 10

8:30 a.m.	Trade Show & Photo Exhibit Opens
11:30 a.m.	WV Angus Association Meeting (EEC)
11 a.m.-1:30 p.m.	Stockman's Judging Contest (Registration: Multipurpose Bldg.)
11 a.m.-1:00 p.m.	Grassland Evaluation Contest
2:00 p.m.	Angus Show
	Limousin Show (immediately follows Angus Show)
2:30 p.m.	Youth Cattle Working Contest
3:00 p.m.	Polled Hereford Show
	Supreme Champion Bull & Heifer Selection (following Polled Hereford show)
4:00 p.m.	WV Simmental Association Meeting (EEC)
5:00 p.m.	Stockman's Contest Awards
	WV Junior Angus Association Meeting (EEC)
5:30 p.m.	WV Junior Polled Hereford Association Meeting (EEC)
6:30 p.m.	Banquet -- Cattlewomen's Benefit Auction (Dining Hall)
	WV Beef Queen speeches & crowning of 2026 WV Beef Queen

## Saturday, April 11

8:30 a.m.	Trade Show & Photo Exhibit Opens
10:00 a.m.	Limousin Sale
10:30 a.m.	Red Angus Sale
11:00 a.m.	Polled Hereford Sale
12:30 p.m.	Simmental Sale
1:00 p.m.	Angus Sale
1:30 p.m.	Charolais Sale

**EXPO CHAIRMAN:** Robert Reed  
**CHAIRMAN ELECT:** Chris Brown  
**SECRETARY:** Debbie Friend  
**TREASURER:** Rod Summers

**Trade Show:** Ronnie Helmondollar  
**Facilities:** Bruce Loyd

**Show & Sale:** Bruce Loyd (overall)  
 Josh Radabaugh (Angus)  
 Amy Kile (Charolais)  
 Kim Getz (Limousin)  
 Stephanie Hawkins (Polled Hereford)  
 Callie Dayton (Red Angus)  
 Bob Nutter (Simmental)

**Catalog:** Jennifer Friend

**Exhibitors Barbecue:** Andy Yost-WVDA

**Beef Queen's Contest:** Emily Yates

**Stockman's Contest:** Scott Bowdridge, Debbie Friend, Jennifer Friend, Ronnie Helmondollar, Bruce Loyd, Sarah Owen

**Banquet:** Rod Summers

**Photo Contest:** Krista Hayes

**Other Expo Members:** Kevin Butcher, Charlie French, Victor Friend, Chuck Hayes, Page King, Paul Lewis, Neil Litton, Nathanael Mason, Mida Peterson, Jason Rexroad, Kevin Shaffer, Maria Shriver, Joe Simcoe, Quill Ward, Casey Wisch

**WEST VIRGINIA**

36th  Annual

**BEEF EXPO**

LOTS 101-130 <b>Limousin</b> PAGES 5-13	LOTS 201-225 <b>Red Angus</b> PAGES 17-31	LOTS 301-350 <b>Polled Hereford</b> SEPARATE CATALOG
LOTS 401-430 <b>Simmental</b> PAGES 33-40	LOTS 501-512 <b>Angus</b> PAGES 45-48	LOTS 601-617 <b>Charolais</b> PAGES 53-59

## Sponsors

WV Cattlemen's Association  
 WVU Extension Service  
 WV Department of Agriculture

WV Angus Association  
 WV Charolais Association  
 WV Limousin Association

WV Polled Hereford Association  
 WV Red Angus Association  
 WV Simmental Association

### TERMS:

Each breed association will handle their own sale. Buyers must settle with sale-clerks at the end of their respective sale. Cattle must be removed from barn within two hours after the end of the last sale unless prior arrangements have been made.

### ONLINE BIDDING :



SALE  
RING  
*.live*

Questions about online bidding?  
 Call 860-716-3626

### HEALTH:

A veterinarian will be onsite to issue health papers to buyers. All bulls pass a breeding soundness exam.

*Neither the consignors, sale chairmen, nor any other person connected with the management of the sale assumes any liability, legal or otherwise.*



### SALE LOCATION:

The sale is located at the Multipurpose Building near the airstrip across from the main campus of WVU Jackson's Mill. GPS services will direct you to the historic area, but you'll need to bypass both entrances on the right, keep straight (on Jackson Mill Road) and take the first left (just past the lodge entrance) down the hill and across the bridge. There will be an attendant to direct parking.

**Address:** 160 Jackson Mill Rd, Weston, WV 26452  
**GPS Coordinates:** 39.09462, -80.47042

### JACKSON'S MILL PHONE:

304-269-5100, ext. 444  
**BARN PHONE:** 304-406-7044

# WV BEEF EXPO BANQUET

Friday, April 10 - 6:30 p.m. | Mt. Vernon Dining Hall- WVU Jackson's Mill

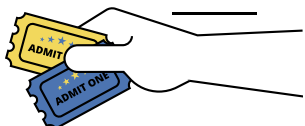
The annual banquet includes an excellent meal featuring beef, the WV Cattlewomen's Auction, Beef Queen speeches, and entertainment from Shaun "Mele Nahenahe" Gomban.

Shaun "Mele Nahenahe" Gomban, a native of Waianae, Hawaii, embodies the rich cultural heritage of the Aloha State through a soulful fusion of traditional Hawaiian melodies and heartfelt country storytelling. With ancestral roots deeply embedded in Hawaii's vibrant music scene, Shaun has established himself as a respected singer-songwriter, captivating audiences with authentic vocals and heartfelt performances. Growing up surrounded by Hawaii's lush landscapes and rhythmic island sounds, Shaun developed a deep appreciation for the musical traditions of his homeland. Inspired by both Hawaiian music and timeless country classics, he has crafted a unique sound that seamlessly blends the two genres into a harmonious and memorable experience. Shaun is a sponsored artist of Kanile'a Ukulele out of Kane'ohe, Hawai'i, and proudly performs with a custom-made Kanile'a instrument that complements his distinctive vocal style. Over the years, he has honed his craft performing at restaurants, hotels, music venues, and private events across the Hawaiian Islands. A sought-after entertainer, Shaun has performed for a wide range of occasions including retirements, promotions, first birthday luaus, weddings, graduations, company events, celebrations of life, and more—leaving a lasting impression wherever he performs. Currently, Shaun is writing and composing his debut album, channeling his passion for storytelling and reverence for his Hawaiian heritage into songs that resonate on a deeply personal level. Through his music, he invites listeners on a journey where the spirit of Hawaii meets the soul of country—creating an experience that is both authentic and unforgettable.



**\$500 DRAWING**

Each person under 25 years of age that attends the banquet will be eligible for a \$500 drawing!



Tickets are **\$30** per person. Tickets can be purchased by calling Rod Summers at 304-842-7958 or email [summersbunch@aol.com](mailto:summersbunch@aol.com). Please make your reservations by March 26, 2026.

## West Virginia Beef Queens

1992	Lisa McClain - Lewis	2009	Joanna Friend - Tyler
1993	Suenette Ketterman - Grant	2010	Amanda Hannon - Mason
1994	Leslie Larew - Preston	2011	Staclyn Evans - Doddridge
1995	Susie Erwin - Doddridge	2012	Jessica Woodworth - Mineral
1996	Emily Parker - Hampshire	2013	Jennifer Friend - Braxton
1997	Christy Young - Putnam	2014	Sarah Page - Mineral
1998	Stephanie Nestor - Barbour	2015	Jaclyn Cleaver - Hardy
1999	Janice Dever - Roane	2016	Emily Hunt - Roane
2000	Stacey Hamric - Braxton	2017	Ivy Ward - Barbour
2001	Hillary Dean - Preston	2018	Natalie Phillips - Preston
2002	Burke Holvey - Gilmer	2019	Emily Yates - Hardy
2003	Melissa Offutt - Wirt	2021	Michala Williams - Mineral
2004	Allison Echols - Monroe	2022	Lacy Mitchell - Roane
2005	Elizabeth Keller - Jackson	2023	Sarah Sions - Mineral
2006	Cassidy Yeager - Taylor	2024	Michelle Sampson - Wood
2007	Katlin Thorsell - Jefferson	2025	Emma Hitt - Harrison
2008	Megan Webb - Mineral		



2025 WV Beef Queen-Emma Hitt



Cover photo was winning cover photo contest winner submitted by Lydia Burns. Other photos used throughout the catalog were submissions in the contest.



One person alone will have little impact on the future of the cattle business, but cattlemen across the state of West Virginia are standing together to make a difference. To face and conquer these issues head-on, the West Virginia Cattlemen's Association exists, in partnership with the National Cattlemen's Beef Association, to protect the business climate for beef.

Members receive networking and producer education opportunities, support for the youth of the industry, and representation in both state and national houses of legislature. Join today to become a part of the effort dedicated to protecting your industry for generations to come.

### Member Benefits:

- Regular Informative Newsletters
- Market Updates and Promotional support
- Representation in State/National Policy Discussions
- Access to Herd Health Tools such as IRM Redbook

Scan this code to go to our website and join!

[wvcattlemen.org](http://wvcattlemen.org)



## JOIN TODAY

Name \_\_\_\_\_

Business/Ranch Name \_\_\_\_\_

Address \_\_\_\_\_

City \_\_\_\_\_ State \_\_\_\_\_ Zip \_\_\_\_\_

Phone \_\_\_\_\_

Email \_\_\_\_\_

Recruited by \_\_\_\_\_

Redbook Needed? \_\_\_\_\_

### WVCA Membership Type:

- State Dues - **\$40.00**
- Steakholder (Prime/Choice/Select) (Contact us)
- Student Dues (18 & Under) - **\$10.00**
- WV Cattlewomen - **\$3.00**

**Total Amount Paid: \$** \_\_\_\_\_

### NCBA Membership Type:

- 1 - 100 Head - **\$180.00**
- 101 - 250 Head - **\$300.00**
- 251 - 500 Head - **\$450.00**
- 501 - 750 Head - **\$650.00**

**Total Amount Paid: \$** \_\_\_\_\_

**Total Amount Paid: \$** \_\_\_\_\_

**Please make checks payable to:**  
West Virginia Cattlemen's Association

### Return Payment to:

WVCA • 62 Farm Bureau Road • Buckhannon, WV 26201



# WEST VIRGINIA BEEF EXPO LIMOUSIN SALE

April 9-11, 2026

Jackson's Mill | Weston, WV

Show: April 10, ~2:30 p.m. Sale: April 11, 10:00 am

Sale day phone: 860-716-3626

SALE SPONSORED &  
MANAGED BY



SALE  
RING  
*.live*

TERMS: The 2026 WV Beef Expo Limousin Sale will sell under the terms and conditions recommended by the North American Limousin Foundation and can be found at <https://nalf.org/management/member-center/>  
EPDS are up to date as of January 2026

# CONSIGNORS



Bradley Piper | 304-671-2322  
Martinsburg, WV  
Lot: 118



Ben Petre | 740-408-2433  
Somerset, OH  
Lots: 104-105, 108-109, 111, 114-115



Ruth Biser | 301-748-7914  
Josie Biser | 301-748-7912  
Keymar, MD  
Lots: 117, 119, 121, 124

*Jennifer Friend*

Jennifer Friend | 304-701-0050  
Exchange, WV  
Lot: 122



Victor Friend | 304-288-3171  
Duck, WV  
Lots: 106, 112-113, 129

**GURNEY LIMOUSIN**



Forrest Gurney | 419-934-0272  
Attica, OH  
Lots: 103, 107



**Limousin**

Kyle Kaufman | 304-991-4895  
Belleville, WV  
Lot: 102



Steven & Barbara Ridgeway | 304-667-2702  
Lewisburg, WV  
Lots: 116, 125



Charlie & Tonja Ridgeway | 304-520-2013  
Ronceverte, WV  
Lots: 127-128, 130



*Performance Cattle*

Kim & Becky Getz | 304-749-8043  
Scherr, WV  
Lots: 101, 120, 123



Joe, Tabby & Samantha Moore | 540-569-6219  
Staunton, VA  
Lots: 110, 126

*Thank you!*

*2025 Limousin Buyers*

Frank Bolyard  
Tim Burga  
Donald Carter  
Steve Christopher  
James Cook  
Timothy Crooks  
Jason Ealy  
Eli Friend

Forrest Gurney  
Allen Mason  
Trevor Miller  
Christopher Mooney  
Mark Ostrowski  
Joe Pryor  
Justin Shutt  
Brenda Waitt

# 101 BULL

## RALF MILO 455M

LFM3718389 | SCGL 455M | 62% LIM-FLEX  
9/11/2024 | HET BLACK | HOMO POLLED

MAGS CABLE  
OLIM KEYSTONE 23K  
OLIM FORTUNA 860F  
EXAR SHOT TIME 3521B

SCGL 747E



SCGL VICTORIA SECRET 902W

CED	BW	WW	YW	MK	CEM	SC	DOC
16	-1.7	58	95	32	8		13

BW: 70 WW: 890 YW: 1215 | *Consigned by Rolling Acres Limousin*  
Milo is a complete package kind of bull. He checks all the boxes – structural correctness, calving ease, explosive performance, a +30 milk EPD, and a puppy dog disposition! He had the 2nd highest adj WW ever recorded at Rolling Acres at 882#.

# 102 BULL

## KFMN NAVIGATOR 126N

LFM3790668 | KFMN 126N | 75% LIM-FLEX  
2/10/2025 | RED | DOUBLE POLLED

WULFS COBRA 2662C  
WULFS EDGE 5045E  
WULFS CHARISMA 5293C  
WULFS COBRA 2662C  
NICO FANCY LIKE 307J  
WULFS EBINA 7026E

CED	BW	WW	YW	MK	CEM	SC	DOC
12	-0.1	66	101	25	7	0.54	12

BW: 67 WW: 630 | *Consigned by Hickory Hollow Farm*  
KFMN Navigator 126N is a low birth weight red bull that will be great for heifers and cows alike. Sired by Wulfs Edge 5045E, with phenotype and maternal traits to make good replacements.

# 103 BULL

## EMMA HAROLD

NPM3662789 | GURN 212N | 90% LIMOUSIN  
2/12/2025 | DOUBLE BLACK | DOUBLE POLLED

JBV YELLOWSTONE 901G  
SYES LODESTONE 110L  
MISS SYES FRIENDLY 106C  
MAGS Y SO TANGLED  
TINY LADY LOVE  
EXLR LADY LOVE 754R

CED	BW	WW	YW	MK	CEM	SC	DOC
12	1.0	56	87	27	6	0.75	9

BW: 70 | *Consigned by Gurney Limousin*  
Emma Harold is square hipped, deep bodied and long haired, sure to put show calves on the ground. Emma Harold is backed with a set of EPD's like a 1.0 BW and a 27 milk that ensure him to handle heifers and cows. Going back to JBV Yellowstone on the sire side and MAGS Y SO TANGLED on the Dam side, Emma Harold will be a great fit for any program.

# 104 BULL

## BCVF NASCAR 210N

NXM3522297 | BCVF 210N | 86% LIMOUSIN  
2/14/2025 | BLACK | HOMO POLLED

WULFS COBRA 2662C  
WULFS GENIUS 5293G  
WULFS CHARISMA 5293C  
WULFS GIFT 5206G  
BCVF LADY'S SLIPPER 210L



BCVF JACAMAR 210J ET

CED	BW	WW	YW	MK	CEM	SC	DOC
19	-3.5	68	101	35	11	0.5	14

BW: 67 WW: 766 | *Consigned by B-C-V Farms*  
Nascar 210N is a 14-month-old Homo Polled, Black bull, that is second to none in calving ease, birth weight and milk all in the top 1% of the breed.



**KFMN NAVIGATOR 126N**  
LOT 102



**EMMA HAROLD**  
LOT 103

**105 BCVF NAVY K398N**  
 NXM3522300 | BCVF K398N | 81% LIMOUSIN  
**BULL** 2/18/2025 | HOMO BLACK | HOMO POLLED

AHCC EARNING POWER 900E  
 COLE EARNING POWER 79H  
 COLE MISS ZONE 4100B  
 WULFS GENIUS 5293G

JPET KRISSEY



BCVF GAIL 398G

CED	BW	WW	YW	MK	CEM	SC	DOC
15	0.1	67	101	28	11	0.65	15

BW: 77 WW: 700 | Consigned by B-C-V Farms

Navy K398N is a 14-month-old bull that is Homo Polled and Homo Black, big stout bull, with enough calving ease to use on heifers and enough growth for a cow herd.

**106 FRBR NAVIGATOR 502N**  
 LFM3521296 | FRBR 502N | 75% LIM-FLEX  
**BULL** 3/4/2025 | HET BLACK | HOMO POLLED

COLE GENESIS 86G  
 LFL JUMPER 1310J ET  
 LFL ELISE 7021E ET  
 MAGS Y SO TANGLED

TMCK BLUE ANGEL 118B



TMCK TARNISHED ANGEL 9211

CED	BW	WW	YW	MK	CEM	SC	DOC
10	-0.5	65	103	26	8	0.39	13

BW: 72 WW: 625 | Consigned by Friend Brothers Limousin

FRBR Navigator 502N is a calving ease Homozygous Polled herd sire prospect that can navigate your breeding program to the next level. He has the muscle the feeders need, the marbling the packers want, and the maternal ability you can build a herd on.

**107 GURN MARK**  
 NXM3662791 | GURN 306N | 85% LIMOUSIN  
**BULL** 3/6/2025 | DOUBLE BLACK | HOMO POLLED

JBV YELLOWSTONE 901G  
 SYES LODESTONE 110L  
 MISS SYES FRIENDLY 106C  
 WULFS GENIUS 5293G  
 BCVF JENESIS 398J  
 BCVF GAIL 398G

CED	BW	WW	YW	MK	CEM	SC	DOC
14	0.8	62	101	24	10	0.07	15

BW: 75 | Consigned by Gurney Limousin

GURN Mark is a big footed, deep ribbed, and power based bull. With a BW of 1.6 he is sure to put nice easy calving on his resume. With a stacked pedigree going back to JBV Yellowstone on the sire side, and Wulfs Genius on the dam side, he is exceptionally bred a true ready to work bull.



**GURN MARK**  
 LOT 107

**108 BCVF NIFTY 438N**  
 NXM3522307 | BCVF 438N | 84% LIMOUSIN  
**BULL** 3/11/2025 | DBL BLACK | HOMO POLLED

CELL ENVISION 7023E  
 WULFS ENVISION G012K ET  
 COLE MISS XRATED 354A  
 WULFS EISENHOWER 3616E  
 WULFS HOBNOB 0438H



WULFS DAMIETTA 6030D

CED	BW	WW	YW	MK	CEM	SC	DOC
8	2.6	73	116	29	6	0.94	13

BW: 98 WW: 746 | Consigned by B-C-V Farms

13--month-old Homo Polled, Double Black bull sired by Wulfs Envision G012K, This is a bull that combines growth, carcass and maternal all into a very useable package.

**PEOPLE'S CHOICE**  
 SELECT YOUR FAVORITE LIMOUSIN BULL AND LIMOUSIN FEMALE TO BE ENTERED TO WIN \$100 SALE CREDIT TOWARD PURCHASE OF A LIMOUSIN LOT AT THE WV BEEF EXPO  
 MUST BE PRESENT TO WIN.



**109** **BCVF HATTI 649H**  
 NXF2279340 | BCVF 649H | 81% LIMOUSIN  
**PAIR** 2/2/2020 | HOMO BLACK | HOMO POLLED

WULFS WALCOTT F711W  
 WULFS YOSEMITE F912Y  
 DMWC WENDY 912W  
 WULFS BUCKSHOT C406B  
 JMFA WINTERS 649D

**GE-EPDs** North American Limousin Foundation  
 PBRs WINTER 449W

CED	BW	WW	YW	MK	CEM	SC	DOC
15	-0.1	47	81	28	8	0.75	9

BW: 72 WW: 535 YW:828 | *Consigned by B-C-V Farms*  
 Hatti 649H is a Homo Black, Homo Polled moderate made 6-year-old cow that will have a calf at side by the great Wulfs Keynote 4815K.  
*A.I 4/19/25 to Wulfs Keynote 4815K, P.E 5/5/25 thru 9/1/25 to L7 MAGA*

**111** **BCVF JACQUELINE 540J**  
 NXF2451688 | BCVF 540J | 75% LIMOUSIN  
**PAIR** 3/13/2021 | DOUBLE BLACK | HOMO POLLED

WULFS COMPLIANT K687C ET  
 WULFS FETOSCOPE K631F ET  
 WULFS ACRE 3630A  
 WULFS BLUE DOLPHIN 1164B  
 BCVF FOUNTAIN 540F  
 HB PAT 540C

CED	BW	WW	YW	MK	CEM	SC	DOC
11	2.0	67	101	31	6	0.75	12

BW: 77 WW: 720 YW: 824 | *Consigned by B-C-V Farms*  
 Here is a nice moderate frame, Homo Polled, Double Black, high percentage, 5-year-old cow with sound feed and legs and a beautiful udder. She will have calf at side by Cole Earning Power 11M.  
*P.E to Cole Earning Power 11M 5/7/25 thru 9/1/25*

**112** **FRBR JEWEL 106J**  
 NPF2442188 | FRBR 106J | 87% LIMOUSIN  
**PAIR** 3/17/2021 | DOUBLE BLACK | DOUBLE POLLED

LFLC DENVER 857D  
 WULFS GENUINE 3312G  
 WULFS ARUBA 3312A  
 TMCK MONTGOMERY 875X  
 WOODBROOK 1348Z  
 WULFS SHIRA 6133S

CED	BW	WW	YW	MK	CEM	SC	DOC
12	1.5	63	88	27	8	0.80	14

BW: 67 | *Consigned by Friend Brothers Limousin*  
 FRBR Jewel 106J is a no nonsense purebred female. She's the kind of sound, good uddered, low maintenance cow that goes unnoticed until you are realizing she raised the biggest calf at weaning.  
*A.I.'d 05/26/25 to Wulfs Filmer 6317F; PE'd to COLE Earning Power 79H 06/16/25 to 08/29/25*

**110** **SJMR HARPER 028H**  
 LFF2333295 | SJMR 028H | 56% LIM-FLEX  
**PAIR** 7/6/2020 | DOUBLE BLACK | DOUBLE POLLED

MAGS APPLESEED  
 MAGS CABLE  
 MAGS ZEQUIN  
 TGBC WESTWIND 221Y  
 SJMR DARLA 601D

JLWM MIRANDA 054X

CED	BW	WW	YW	MK	CEM	SC	DOC
12	1.4	74	114	28	8	1.20	15

BW: 78 | *Consigned by T&J Cattle Company*  
 This powerful Lim-flex (56%) female and impressive bull calf stamped with growth and real-world performance are yours for the taking. This tremendous, complete female is out of the chart-topping MAGS Cable back to a TGBC Westwind 221Y daughter. She has strong maternal numbers, good udder quality, and longevity throughout her pedigree.

**110A** **SJMR PRIME RATE 615P**  
 LFM3791347 | SJMR 615P | 55% LIM-FLEX  
**PAIR** 1/18/2026 | DOUBLE BLACK | DOUBLE POLLED

MAGS FEDERAL RESERVE ET  
 AHCC FEDERAL RESERVE 042K  
 AHCC MISS EASY RIDER 042H  
 MAGS CABLE  
 SJMR HARPER 028H  
 SJMR DARLA 601D

CED	BW	WW	YW	MK	CEM	SC	DOC
13	0.8	75	116	28	9	1.20	15

BW: 72 | *Consigned by T&J Cattle Company*  
 The thick, mighty bull calf brings more quality and merit to the package. His sire, AHCC Federal Reserve 042K, has given us calves that top our bull sales and females that we keep. Prime Rate is a nice genetic and sound phenotypic piece to add to any program. A herd sire prospect in the making!



**COLE EARNING POWER 79H**  
 SIRE OF LOT 105; SERVICE SIRE  
 OF LOT 113, PE SIRE OF 112

**113 FRBR JELLY BEAN 158J**  
 NPF2495003 | FRBR 158J | 87% LIMOUSIN  
**PAIR** 11/5/2021 | DOUBLE BLACK | DOUBLE POLLED

LFLC DENVER 857D  
 WULFS GENUINE 3312G  
 WULFS ARUBA 3312A  
 MAGS CURRENT DELIVERY  
 FRBR EMMA JEAN 708E  
 FRBR BUTTERFLY KISSES 452B

CED	BW	WW	YW	MK	CEM	SC	DOC
13	0.6	60	93	18	7	0.73	11

BW: 80 | Consigned by Friend Brothers Limousin  
 FRBR Jelly Bean 158J is a moderate framed young female that does a lot of things right. Quiet disposition, well designed udder, sound structure, and balanced EPD's, just to name a few.  
 P.E.'d to COLE Earning Power 79H 06/16/2025 to 08/29/25

**115 BCFV KOALA 804K**  
 NXF3350366 | BCFV 804K | 82% LIMOUSIN  
**PAIR** 9/22/2022 | HOMO BLACK | HOMO POLLED

WULFS COBRA 2662C  
 WULFS GENIUS 5293G  
 WULFS CHARISMA 5293C  
 WULFS CONVERSION 3970C

BCFV FELICITY 804F ET  
**GE-EPDs** DHIL TMG 5795C ET  
North American Limousin Foundation

CED	BW	WW	YW	MK	CEM	SC	DOC
11	1.8	72	112	32	9	0.00	15

BW: 72 | Consigned by B-C-V Farms  
 Koala 804K is a Homo Polled, Homo Black 3-year-old big, stout, sound cow that will have a calf at her side by AHCC Heartland 901F.  
 A.I to AHCC Heartland 901F 4/24/25, P.E 5/5/25 thru 9/1/25 to L7 MAGA 4003M

**117 JRBL NADIA**  
 LFF3419135 | JRBL L42N | 57% LIM-FLEX  
**HEIFER** 2/23/2025 | DOUBLE BLACK | DOUBLE POLLED

D A TRAVELER 004 703  
 EF XCESSIVE FORCE  
 CFLX MOLLYS IMAGE  
 CJSL DAUNTLESS 6257D ET  
 JRBL LEXI  
 TASF FANTASY 242F ET

CED	BW	WW	YW	MK	CEM	SC	DOC
11	-0.2	60	94	17	7	1.11	13

BW: 90 | Consigned by Biser Limousin  
 EF Xcessive Force daughter that is double black and double polled. Big bodied, high-volume female that's attractive through her front end and steps out with tremendous power off both ends. Great replacement for any program.

**114 BCFV KIMBERLY 912K ET**  
 NPF2528340 | BCFV 912K | 100% LIMOUSIN  
**PAIR** 2/3/2022 | RED | HOMO POLLED

HUNT TESTAMENT 40T  
 HUNT CREDENTIALS 37C ET  
 JKTW WHISKEY RIVER 985 W  
 WULFS XCELLSIOR X252X  
 WULFS ENCHILADA 7368E  
**GE-EPDs** WULFS AUTUMN 3355A  
North American Limousin Foundation

CED	BW	WW	YW	MK	CEM	SC	DOC
13	-0.3	64	98	36	8	0.75	14

BW: 90 WW: 567 YW: 916 | Consigned by B-C-V Farms  
 Kimberly 912K is a Red Purebred homo polled, 4-year-old cow, that will have a calf at her side.  
 A.I 5/15/25 to Wulfs Xtractor X233X, P.E 5/17/25 thru 09/01/25 to Cole Earning Power 11M

**116 LOVL LRF MINDY 50M**  
 LFF3203379 | LOVL 50M | 37% LIM-FLEX  
**BRED** 3/23/2024 | DOUBLE BLACK | DOUBLE POLLED

TEHAMA TAHOE B767  
 CONNEALY GUARD RAIL 923E  
 QUEEN BABES OF CONANGA 870J  
 C L BURBANK  
 CTFL ELEGANCE 50E  
 KFMN MAZIE 24Y

CED	BW	WW	YW	MK	CEM	SC	DOC
13	-0.5	72	112	28	8		13

BW: 78 | Consigned by Ridgeway Family Limousin  
 AI 6/23/25 to AHCC Landmark 917L, PE'd 7/4/25 thru 11/14/25 to Dawson Farms Patriarch 2311



**JRBL NADIA**  
 LOT 117

# 118 ATLC NOW N LATER 501N

LFF3522156 | ATLC 501N | 50% LIM-FLEX  
HEIFER 3/1/2025 | RED | HOMO POLLED

HUNT CREDENTIALS 37C ET  
ROYAL JESTER RBGL 103J  
BOSS LAKE MS MOLLY 812F ET  
EGL GCC RED EAGLE E7194  
TASF MISS PRIDE 221K  
HB MISS PRIDE 8116F

CED	BW	WW	YW	MK	CEM	SC	DOC
9	0.8	66	97	24	6		12

BW: 70 | Consigned by Apple Tree Livestock Company  
RED Alert! Sired by Royal Jester who provides a packed EPD profile along with the phenotype to make them look pretty! This heifer is eye appealing, moves like a cat, and would make a great breeding piece for any program!

# 120 RALF NIKKI 529N

LFF3791326 | RKGL 529N | 47% LIM-FLEX  
HEIFER 3/14/2025 | DOUBLE BLACK | DOUBLE POLLED

DEBV GLADIATOR 917G  
VL KOOL HAND LUKE 209K  
VL FANNY MAE 811F  
HUBB BULLETPROOF  
RKGL 108J  
RKGL JACKIE 707E

CED	BW	WW	YW	MK	CEM	SC	DOC
14	-1.3	64	106	23	9		15

BW: 70 | Consigned by Rolling Acres Limousin  
Nikki is a feminine and stylish made heifer with power to burn. She is a definite show heifer prospect with a calm disposition.

# 121 ODESSA

LFF3419536 | JSLB L04N | 58% LIM-FLEX  
HEIFER 3/15/2025 | DOUBLE BLACK | DOUBLE POLLED

D A TRAVELER 004 703  
EF XCESSIVE FORCE  
CFLX MOLLYS IMAGE  
TASF CLAC HEAVY HITTER 393H ET  
JOTB LAYNE  
TASF DIVERGENT 004D ET

CED	BW	WW	YW	MK	CEM	SC	DOC
11	-0.3	61	94	16	7	1.20	10

BW: 60 | Consigned by Biser Limousin  
Odessa is an Xcessive Force daughter out of a first calf heifer. She's perfectly built in her head and neck, taking after her granddam TASF Divergent 004D, an AUTO Bette daughter. She has all the right qualities to create tremendous calves in her future.

# 119 BUCKLE BUNNY

LFF3419534 | JSLB L24N | 64% LIM-FLEX  
HEIFER 3/3/2025 | DOUBLE BLACK | DOUBLE POLLED

D A TRAVELER 004 703  
EF XCESSIVE FORCE  
CFLX MOLLYS IMAGE  
TASF CROWN ROYAL 960C ET  
JSLB LORETTA LYNN  
JRBL FANCY

CED	BW	WW	YW	MK	CEM	SC	DOC
8	1.2	66	100	17	4	1.34	10

BW: 84 | Consigned by Biser Limousin  
Buckle Bunny is an Xcessive Force daughter of a first calf heifer. She is correct in her hip and skeleton, taking after her dam, JSLB Loretta Lynn. She comes from a great cow family. This heifer will have a great impact on your herd.



**BUCKLE BUNNY**  
LOT 119



**ODESSA**  
LOT 121

**122****JNFL NANDINA 517N**

NXF3490406	JNFL 517N	83% LIMOUSIN
4/6/2025	BLACK	DOUBLE POLLED

**HEIFER**

WULFS FIFTY T804F

JNFL KING LOUIE 208K

MLFB EASY HEART 705E

JBV YELLOWSTONE 901G

JNFL KAYCE 212K

NICO ELSA 38B

CED	BW	WW	YW	MK	CEM	SC	DOC
10	1.3	68	108	26	6	0.94	11

BW: 68 WW: 492 | *Consigned by Jennifer Friend*

Fancy April-born purebred heifer offering added muscle and depth, backed by two powerful cow families and ranking in the top 30% of the breed for yearling weight.

**124****JRBL NICKY**

NXF3419146	JRBL H72N	76% LIM-FLEX
4/30/2025	HOMO BLACK	DOUBLE POLLED

**HEIFER**

MAGS FIRESTONE 218F

TASF CLAC HEAVY HITTER 393H ET

AUTO PEYTON 206Y

EF XCESSIVE FORCE

TASF CLAC HOPELESS 372H ET

AUTO PEYTON 206Y

CED	BW	WW	YW	MK	CEM	SC	DOC
14	-0.5	55	83	20	8	0.57	5

BW: 67 | *Consigned by Biser Limousin*

TASF CLAC Heavy Hitter 393H late spring daughter that offers a unique combination of balance and volume. Attractive profiling heifer that is bold yet feminine in her muscle pattern and steps out with ease.

**125****CRGY NELLIE**

NXF3606198	CRGY 12N	79% LIMOUSIN
6/1/2025	DOUBLE BLACK	DOUBLE POLLED

**HEIFER**

COLE GENESIS 86G

RFML STEELDRIVER

AUTO HENSLEY 212H ET

TASF GREY GOOSE 333G ET

ELCX KEEPER 158K

OCCC BAKANA 158B

CED	BW	WW	YW	MK	CEM	SC	DOC
10	1.8	60	93	28	6	0.57	11

BW: 65 | *Consigned by Ridgeway Family Limousin*

CRGY Nellie is tall shouldered, large outlined female that is double polled and double black. Her dam ELCX Keeper, a daughter of TASF Grey Goose, had a very successful show career. She is furthering her success in the field with her progeny. We believe this will pass on to this heifer.

**123****RALF NORA 552N**

LFF3791327	RKGL 552N	54% LIM-FLEX
4/19/2025	DOUBLE BLACK	HOMO POLLED

**HEIFER**

DEBV GLADIATOR 917G

VL KOOL HAND LUKE 209K

VL FANNY MAE 811F

LFL DOCTOR 6316D ET

RKGL 203K

RKGL 519C

CED	BW	WW	YW	MK	CEM	SC	DOC
12	0.3	63	102	24	7		15

BW: 75 | *Consigned by Rolling Acres Limousin*

Nora is a soggy made, broody female sired by the 2023 Iowa Beef Expo People's Choice Bull, VL Kool Hand Luke. She should develop into a top-notch cow and has a quiet disposition.

**JRBL NICKY**

LOT 124

*Join us in*

**All Limousin/Lim-Flex heifers  
offered are eligible to show!**

**126 TJMR NOVA 532N**  
 LFF3791348 | TJMR 532N | 65% LIM-FLEX  
**HEIFER** 7/18/2025 | HOMO BLACK | HOMO POLLED

HUNT BILLY RAY 80B  
 DANH DURHAM 54D  
 DANH ALTO 35A  
 DANH 47F ET  
 TJMR KILO 212K  
 TJMR 837F

CED	BW	WW	YW	MK	CEM	SC	DOC
14	-0.6	64	107	20	19	0.75	15

BW: 68 | Consigned by T&J Cattle Company  
 Nova is a high quality, stylish Lim-Flex heifer out of the legendary DANH Durham 54D. She is Homo-Black, Homo-Polled and brings thickness, balance, depth, and soundness to the forefront. With a stacked pedigree for long term value, Nova is a standout with championship potential.

**127 RCC NAOMI 509N ET**  
 LFF3522574 | CTPL 509N | 75% LIM-FLEX  
**HEIFER** 8/30/2025 | HOMO BLACK | HOMO POLLED

TASF CROWN ROYAL 960C ET  
 KLS SULL CHARMER ET  
 RIVERSTONE CHARMED  
 SILVEIRAS STYLE 9303  
 AUTO HAZE ET  
 AUTO LUCKIE 246W

**GE-EPDs**  
North American Limousin Foundation

CED	BW	WW	YW	MK	CEM	SC	DOC
8	5	72	112	25	4	0.78	8

BW: 66 | Consigned by Ridgeland Cattle Company  
 Dam & Full sister were Champion pair @ Southeast Summer Classic, State Fair of WV, Supreme Pair Kentucky State Fair & Reserve Limousin Pair at NAILE. Her dam produced some excellent calves and we feel this one will be also. We will reserve the right to two successful flushes at our expense and buyers convenience.

**129 FRBR NIKKI 561N**  
 NPF3718443 | FRBR 561N | 92% LIMOUSIN  
**HEIFER** 10/12/25 | DOUBLE BLACK | DOUBLE POLLED

FWLY CAN DO  
 RATLIFF JUMP START 340J ET  
 RIVERSTONE CHARMED  
 WULFS EAGLE SCOUT 4007E  
 RGLW JAZZY GIRL 101J  
 FRBR ESERALDA 756E

CED	BW	WW	YW	MK	CEM	SC	DOC
6	3.1	69	98	29	5	0.69	13

BW: 81 | Consigned by Friend Brothers Limousin  
 We're really excited about the future of this fall born purebred show prospect! Long front, deep rib, big foot, soft pastern, and a good balance of power and femininity. When her days in the show ring have passed, she'll go to work with a milk EPD that's in top 20% of the breed.

50% of the proceeds from the sale of lot 126, TJMR Nova 532N will go to supporting the Eastern Regional Junior Limousin Show in Lewisburg, WV in May. Reach deep in your pockets for your bid on this one to help the Limousin Juniors!

Thank you.  
 T&J Cattle Company!

**128 RCC NANCY 517N**  
 LFF3522463 | CTPL 517N | 75% LIM-FLEX  
**HEIFER** 9/2/2025 | HOMO BLACK | HOMO POLLED

DHVO DEUCE 132R  
 TASF CROWN ROYAL 960C ET  
 TASF WHISKEY LULLABY 357W  
 SILVEIRAS STYLE 9303  
 RCC JUST MY STYLE 2151J ET  
 RIVERSTONE LUCKY CHARM 50F ET

CED	BW	WW	YW	MK	CEM	SC	DOC
13	-0.5	72	112	28	8		13

BW: 78 | Consigned by Ridgeland Cattle Company  
 Talking about pedigrees this one has it. Sired by TASF Crown Royal, who has produced a tremendous number of excellent calves. Then on the dam side she's out of a Style x full sister to Riverstone Charmed. This calf is stacked with an elite show pedigree.

**130 RCC NATALIE 506N**  
 NXF3522456 | CTPL 506N | 77% LIM-FLEX  
**HEIFER** 11/1/2025 | HOMO BLACK | HOMO POLLED

TASF CROWN ROYAL 960C ET  
 KLS SULL CHARMER ET  
 RIVERSTONE CHARMED  
 MAGS AVIATOR  
 CELL AVA'S GIRL 9567G  
 CELL 7367E ET

CED	BW	WW	YW	MK	CEM	SC	DOC
11	1.7	64	102	26	6	0.46	11

BW: 66 | Consigned by Ridgeland Cattle Company  
 This is another stacked pedigree calf that could show as a purebred in the junior show at Eastern Regional. Sired by KLS SULL Charmer that produces calves that are thick and have tremendous bone in them. Then on the Dam side she's out of a Linhart cow that has produced excellent herd bulls for us.

*Take 'em home & turn 'em out!*

# Switzerland of Ohio

Polled Hereford Association

## 48th Annual Sale

Friday, May 8, 2026 - 7 p.m.

Guernsey Co. Fairgrounds, Old Washington, Oh.

Located 6 miles from the I-70 & I-77 interchange

Great Selection of Bulls + Cow calf pairs + Heifers



For more information

Rick Van Fleet, Secretary 21989 Woodsfield Rd., Sarahsville, Oh. 43779 740 732-4783

Follow us on facebook.



**(304) 636-8363**

[www.elkinsvet.com](http://www.elkinsvet.com)

Dr. Miller Dr. Harvey Dr. Walker Dr. Martin

Herd Medicine / Preg Checks

Disease Surveillance

Diagnostic Lab

Heifer Ultrasounds

Breeding Soundness

Farm Service

Calf ICU

Surgery

Small Ruminant Services

*Serving North Central West Virginia Since 2005*



**FREEDOM AG & ENERGY**  
*Powering your farm, home & community*



## **YOUR LOCAL FARMERS' COOPERATIVE HERE TO MEET YOUR FARMING NEEDS**

**Braxton Branch:**  
Gassaway, WV  
304-269-4300

**Buckhannon Branch:**  
Buckhannon, WV  
304-472-1356

**Buckhannon HVAC  
/Propane Facility:**  
304-472-1020

**Greenbrier Branch:**  
Ronceverte, WV  
304-647-5501

**Oakland Branch:**  
Mountain Lake Park, MD  
301-334-3121

**Petersburg Branch:**  
Petersburg, WV  
304-257-1771

**Stephens City Branch:**  
Stephens City, VA  
540-869-3132

**Weston Branch:**  
Weston, WV  
304-269-4300



[www.freedomagandenergy.com](http://www.freedomagandenergy.com)



35 North Street  
Union, WV  
304-772-5174

# Todd Belcher INSURANCE

**FARM HOME AUTO LIFE ANNUITIES**

**540-810-5091**  
Mark Glick

**540-810-0277**  
Ally Glick

We are proud to offer the complete line of RBW Ag hydraulic and manual cattle chutes, alleys, tubs, continuous fencing, and feeders. We are an authorized, direct dealer for Gallagher Scales and Tru-Test.

We offer quick and easy on-site financing through our partnership with Farm Credit Express.

Inventory and working station on site.



**BRIDGEWATER, VA**

# REDS RISING

## Escalate Your Prosperity

Red Angus boosts profitability with docile temperaments, environmental resilience, premium carcass quality and exceptional maternal traits. Registrations have surged by 24% over the past decade, underscoring Red Angus' significance across all segments of the beef industry.

**Scan the QR code for  
real rancher stories  
about the rising power  
of Red Angus.**



**RED ANGUS**

RANCH TESTED. RANCHER TRUSTED.

[RedAngus.org](https://RedAngus.org)

# 2026 West Virginia Beef Expo

## MOUNTAINEER RED ANGUS CLASSIC

Saturday, April 11, 2026  
Sale Start Time Approximately 10:30 a.m.

**WVU Jackson's Mill**  
160 Jackson Mill Rd.  
Weston, WV 26452

**Auctioneer: John Spiker (Lic. No. 184-26) | Cell: 304.677.0255**  
**Sale Manager: Charlie French | Cell: 304.299.4235**  
**Additional Sale Day Phones: Callie Dayton 304.668.2102 | Casey Wisch 540.454.2505**

### 2026 Mountaineer Red Angus Classic Consignors

<b>Dayton Cattle</b> .....	<b>207-212</b>
PO Box 282, Maysville, WV 26833   (304) 668-2102   daytoncattle.com	
<b>Fingerboard Farms</b> .....	<b>204</b>
12089 Fort Valley Rd, Fort Valley, VA 22652   (540) 333-5460   ramfarm@shentel.net	
<b>French Farms</b> .....	<b>213-214</b>
876 Brushy Fork, Cairo, WV 26337   (304) 299-4235   frenchfarmsredangus@gmail.com	
<b>Goose Creek Farm</b> .....	<b>205-206</b>
1545 Delp Rd, Whiteford, MD 21160   (410) 322-3001   reelinfish@yahoo.com	
<b>Long Stone Farm, LLC</b> .....	<b>215-223</b>
38212 Long Ln, Lovettsville, VA 20180 (540) 454-2505   longstonefarmva.com	
<b>Mountaineer Red Angus</b> .....	<b>224-225</b>
8132 Rocky Ridge Rd, Thurmont, MD 21788   (301) 473-1066   mtnredangus@gmail.com	
<b>Pelton Hills Farm</b> .....	<b>201-203</b>
3245 Boyer Rd, Fort Valley, VA 22652   (540) 333-1610   yesmar@shentel.net	



SALE  
RING  
.live

Watch **LIVE** and  
**BID ONLINE** at  
**salering.live**

### Sale Terms & Conditions

*All cattle sell according to the  
Terms and Conditions as  
suggested by the **Red Angus**  
**Association of America**. A copy of  
which will be available sale day.*

# 201 GRAM BANE BERRY M41

COW 02-04-2024 GRAM: M41  
1AR / 100% AR 4943460

LASO BUCKET LIST E8G  
NIO AMERICAN FREEDOM 1005



NIO LAKOTA 9251  
RED TER-RON SANTANA 73C

NIO BANE BERRY 8073  
RED SOO LINE BANE BERRY 5238

ProS	HB	GM
112	59	53
38%	38%	44%

CED	BW	WW	ADG	YW	MILK	HPG	CEM	STY	MRB	YG	CW	REA
7	0.9	79	0.25	119	21	15	3	15	0.59	0.03	15	0.19
91%	91%	12%	46%	23%	89%	8%	98%	46%	23%	38%	77%	37%

With Niobrara breeding on top and bottom of her pedigree, M41 stands in the top 12% for WW, top 23% for YW, and touting a ME in the top 22%. M41 is stacked for efficient performance. Bred to GRAM KNOCKOUT 422K #4770183 for a May calf.

Consigned by Pelton Hills Farm



SIRE OF LOT 201, NIO AMERICAN FREEDOM 1005

# 202 GRAM GYPSY N56

COW 02-25-2025 GRAM: N56  
1AR / 100% AR 5167597

LEACHMAN PLEDGE A282Z  
HXC ALLEGIANCE 5502C

HXC 100Y  
MESSMER PACKER SO08  
GRAM GYPSY PACKER H08  
PANHANDLE GYPSY 690

ProS	HB	GM
131	61	70
17%	34%	16%

CED	BW	WW	ADG	YW	MILK	HPG	CEM	STY	MRB	YG	CW	REA
12	-1.3	63	0.25	103	21	13	7	16	0.66	0.09	23	0.12
61%	59%	64%	45%	54%	90%	27%	49%	36%	16%	73%	49%	51%

Ranking in the top 16% for ProS and the top 15% for GM while blending CE together with solid growth traits, N56 indexes to the top of the pack. Moderate in size and efficient in scale, N56 sells open and ready to breed to the bull of your choice.

Consigned by Pelton Hill Farms



SIRE OF LOT 204, LELAND MARKSMAN 6629

# 203 GRAM MARIGOLD 84M

COW 09-18-2024 GRAM: 84M  
1AR / 100% AR 5084187

BROWN JYJ REDEMPTION Y1334

LSF BRA NO WORRIES 4657B

LSF CRYSTAL R5154 X0105

FEDDES OSCAR X28

GRAM MARIGOLD OS 82K

GRAM MARIGOLD ET 146

ProS	HB	GM
93	33	59
67%	83%	32%

CED	BW	WW	ADG	YW	MILK	HPG	CEM	STY	MRB	YG	CW	REA
14	-3.2	66	0.28	110	25	9	7	13	0.61	0.08	20	-0.01
41%	26%	52%	28%	40%	52%	88%	47%	71%	21%	64%	61%	77%

Sired by the ABS multi-trait leader LSF BRA NO WORRIES 4657B, 84M blends production with style. A.I Bred to the ABS performance and phenotype leader BB PROPULSION 9096 #4169122 on 12.19.2025 and pasture exposed to GRAM KNOCKOUT 422K #4770183 from 12.13.2025 - 02.14.2025. Breeding update available sale day.

Consigned by Pelton Hill Farms

# 204 FBF MKMN MIA DINA 6227-244

COW 03-03-2024 FBF: 244  
1AR / 100% AR 5008335

WFL MERLIN 018A

LELAND MARKSMAN 6629

LELAND CHATEAU 747

LSF SRR REDEMPTION 4210B

LSF SRR DINA A3015 D6227

LSF SRR DINA T7090 A3015

ProS	HB	GM
79	37	43
83%	79%	71%

CED	BW	WW	ADG	YW	MILK	HPG	CEM	STY	MRB	YG	CW	REA
12	-2.4	63	0.26	105	35	12	8	12	0.39	0.08	15	-0.01
54%	39%	62%	40%	51%	1%	34%	25%	84%	63%	68%	76%	77%

Exceptional Calving Ease numbers coupled with balanced growth traits, 244 will have a long productive career. By Marksman, with LSF direct breeding on the bottom side of her pedigree, 244 sells A.I. bred to LORENZEN DISRUPTOR 9930 #4114668 on 12.11.2025. Pasture exposed to GRAM KNOCKOUT 422K #4770183 from 12.13.2025 - 02.14.2025. Breeding update available sale day.

Consigned by Fingerboard Farms

## 205 GC 136M GLACIER

COW 12-09-2024  
1AR / 100% AR

GC: 136M  
5091627

COLLIER FINAL PRODUCT B389  
COLLIER FINISHED PRODUCT

COLLIER AMY B385

SILVEIRAS MISSION NEXUS 1378

GC BLAZE 57G

SLGN BAILEY'S TESS 751T



ProS	HB	GM
106	35	70
47%	81%	16%

CED	BW	WW	ADG	YW	MILK	HPG	CEM	STY	MRB	YG	CW	REA
11	-1.8	73	0.33	125	18	12	9	10	0.36	0.04	42	0.28
70%	50%	26%	8%	15%	98%	37%	20%	93%	74%	42%	4%	24%

GC 136M Glacier has a unique combination of show ring presence and maternal traits. She is sired by Collier Finished Product; an attractive soft bodied bull with a strong pedigree that consistently produces fantastic females- feminine calves with impeccable udders and exceptional depositions. GC 136M Glacier is out of a consistent dam that raises high placing show heifers year after year that go on to make outstanding dams themselves. Glacier is halter broken, has been shown, and won her division at the Maryland state fair. She has already proven herself in the show ring and is ready to go on and become an outstanding dam for any herd.

Consigned by Goose Creek Farm



LOT 206, GC 36N BLACK MARLIN



LOT 205, GC 136M GLACIER

## 206 GC 36N BLACK MARLIN

BULL 01-25-2025  
1AR / 100% AR

GC: 36N  
5091625

DAMAR POWER EYE C510  
TWG RED EYE SPECIAL 301F

TWG ELTHEA 301D

RED SOO LINE POWER EYE 161X

GC BRANCHES 61G

JK RED PERLA 303



ProS	HB	GM
32	9	24
99%	98%	95%

CED	BW	WW	ADG	YW	MILK	HPG	CEM	STY	MRB	YG	CW	REA
9	-0.4	65	0.20	96	22	10	3	10	0.26	0.01	18	0.10
83%	77%	56%	81%	71%	85%	79%	96%	93%	89%	27%	67%	55%

GC 36N Black Marlin is a wide powerful bull that will add pounds and power to your calf crop. He is sired by TWG Red Eye Special; a highly acclaimed, triple-crown winning Red Angus bull known for his exceptional phenotype, muscle, and genetics. His dam is easy keeping consistent producing female sired by Red SOO Line Power Eye; known for producing stout muscular cattle and daughters that will maintain body weight while producing high quality calves. GC 36N Black Marlin has all the phenomenal traits of his sire and grand sire, making an outstanding bull that will produce powerful calves that will stand out on the rail or can produce calves year after year. He also has a birth weight EPD of - 0.4, making him great for all cattle including first time calvers.

Consigned by Goose Creek Farm



DAM OF LOT 207, JCL ICE QUEEN 912G

## 207 DAYT RED QUEEN 504 ET

COW 03-24-2025  
1AR / 100% AR

DAYT: 504  
5124517

ROJAS RIOJA 6052  
DUFF RED BLOOD 18114

DUFF JUANDA 927K 15124

PZC TMAS FIRESTORM 1800 ET

JCL ICE QUEEN 912G

RED LAZY MC LORIN 168D



ProS	HB	GM
42	10	32
99%	98%	95%

CED	BW	WW	ADG	YW	MILK	HPG	CEM	STY	MRB	YG	CW	REA
10	-1.8	68	0.21	102	30	10	6	7	0.30	-0.05	18	-0.09
80%	50%	44%	73%	58%	13%	85%	74%	99%	84%	8%	69%	88%

She speaks for herself. DAYT RED QUEEN 504 ET has all the right pieces - good feet, phenotype, good numbers, with MILK in the top 13%. Her mother, JCL ICE QUEEN 912G was a top donor at JCL Red Angus before their dispersal and has produced many popular, successful progeny in her time. Sells open.

Consigned by Dayton Cattle

# Red Angus Genetics that Improve Ranchers' Bottom Lines



4959162

**Aptitude**

25,416 \$Profit (.8%), \$237 \$Feeder (.2%)  
16 CED to 127 YW Spread, 1.19 Marb (1%)



4641289

**Ideal**

24,854 \$Profit (1%), \$99 \$Ranch (5%)  
16 CED to 151 YW Spread, .95 Marb (3%)



4778293

**Houdini**

21,193 \$Profit (1%), \$111 \$Ranch (3%)  
17 CED to 126 YW 1% Fertility, 1% Feed Efficiency



4934928

**Prolific**

25,940 \$Profit (.7%), \$141 \$Ranch (.8%)  
18 CED to 130 YW, 3.46 Fertility (.3%)

Dams, daughters & sisters of the High  
Selling bulls from the **R.A. Brown Ranch**,  
sired by the most cutting edge, high \$Profit,  
Mult-trait sires in the Red Angus breed

**Semen Available on Most Sires**

**Annual Production Sale**  
**First Saturday of November**



Scan Code to join  
our mailing list

## Cedar Hill Farm • Registered Red Angus

Dan & Alicia Stickel • 1404 Kincheloe Road • Jane Lew, WV 26378

(304) 545-7677 • cedarhillredangus@frontier.com • www.cedarhillredangus.com

# 208 DAYT HONEY BUN 460

COW 10-02-2024 DAYT: 460  
1AR / 100% AR 5105979

MANN RED BOX 55C  
DUFF RED BEAR 18154  
RED CC PANTERA 20A  
CRUMP SUPREME 7813  
STRA QUEEN 044  
NSFR QUEEN D8



ProS	HB	GM
90	49	41
71%	57%	74%

CED	BW	WW	ADG	YW	MILK	HPG	CEM	STY	MRB	YG	CW	REA
10	-0.3	81	0.35	137	27	12	4	17	0.20	0.03	28	0.14
74%	79%	10%	4%	6%	34%	43%	92%	23%	95%	39%	28%	47%

Affectionately named by our nephew after his favorite snack cake, HONEY BUN 460 boasts frame and femininity while bringing along a stacked pedigree of phenotype and production. Her dam hails from the heart of the Tweedt Red Angus program. Al'd 1/12/26 9 MILE FRANCHISE 6305. Breeding update will be available on sale day.

Consigned by Dayton Cattle



SIRE OF LOT 208, DUFF RED BEAR 18154

# 209 DAYT MTX 463

COW 10-03-2024 DAYT: 463  
1AR / 100% AR 5105983

MANN RED BOX 55C  
DUFF RED BEAR 18154  
RED CC PANTERA 20A  
SILVEIRAS MISSION NEXUS 1378  
5OAK MTX 0301  
NSFR MTX W14



ProS	HB	GM
91	44	47
70%	66%	62%

CED	BW	WW	ADG	YW	MILK	HPG	CEM	STY	MRB	YG	CW	REA
14	-2.3	66	0.30	114	23	11	6	15	0.23	0.01	24	0.10
41%	41%	51%	17%	33%	78%	70%	69%	46%	92%	30%	46%	55%

MTX 463 hails from one of the three original cows we acquired in 2022 at the establishment of our herd. 5OAK MTX 0301 consistently delivers smooth, stylish calves with no fuss and a beautiful udder. MTX 463 is easy keeping – both in production and dollars in your pocket. Al'd 2/4/26 to DUFF RED BLOOD 18114. Breeding update will be available on sale day.

Consigned by Dayton Cattle

# 210 DAYT MISS KURUBA DE 467

COW 10-07-2024 DAYT: 467  
1AR / 100% AR 5105989

DAMAR POWER EYE C510  
TWG RED EYE SPECIAL 301F  
TWG ELTHEA 301D  
SIX MILE SIGNATURE 295B  
NIO MISS KURUBA DE 8065  
WCR MISS KURUBA DE 2085Z



ProS	HB	GM
9	-2	11
99%	99%	99%

CED	BW	WW	ADG	YW	MILK	HPG	CEM	STY	MRB	YG	CW	REA
0	3.4	69	0.21	103	14	8	0	12	-0.06	-0.06	24	0.23
99%	99%	40%	73%	55%	99%	98%	99%	83%	99%	6%	48%	30%

467 is the kind of heifer you'd want a field full of. Not only is she easy on the eyes, she's backed by one of the best cow families in the breed – going back to a KURUBA DE 2085 cow we acquired from Niobrara Red Angus. Her sire, Red Eye Special was a National Champion at National Western Stock Show. 467 is a moderate framed powerhouse – the kind we strive for. Al'd 1/11/26 to DUFF RED BLOOD 18114. Breeding update will be available on sale day.

Consigned by Dayton Cattle



NIO MISS KURUBA DE 8065, DAM OF LOT 210

# 211 DAYT SKYMERE 470

COW 10-18-2024  
1AR / 100% AR

DAYT: 470  
5141323

LSF SRR POWER BROKER 9370G

RVFI POWER BROKER 155J

LSF MINOLA Y1085

KCC PINNACLE 949-109

RMSY SKYMERE 02H

RMSY SKYMERE JKH 36A



ProS	HB	GM
93	51	42
66%	52%	73%

CED	BW	WW	ADG	YW	MILK	HPG	CEM	STY	MRB	YG	CW	REA
18	-6.3	61	0.24	99	22	14	8	13	0.43	0.16	21	-0.09
11%	2%	73%	55%	65%	84%	16%	25%	72%	51%	93%	58%	88%

We acquired SKYMERE 470's dam from Pelton Hills Farm at this sale a few years back. With CED in the top 11% and BW in the top 2%, 470 will be powerhouse producer year after year with little to no fuss. AI'd 1/11/26 to BROWN JYJ REDEMPTION Y1334. Breeding update will be available on sale day.

Consigned by Dayton Cattle

# 212 DAYT ABIGAIL 473

COW 10-21-2024  
1AR / 100% AR

DAYT: 473  
5105991

LSF SRR POWER BROKER 9370G

RVFI POWER BROKER 155J

LSF MINOLA Y1085

RREDS SENECA 731C

STRA ABIGAIL 064

KUHN'S ABIGAIL B039



ProS	HB	GM
119	49	70
29%	57%	16%

CED	BW	WW	ADG	YW	MILK	HPG	CEM	STY	MRB	YG	CW	REA
9	-0.9	80	0.30	127	24	12	6	13	0.37	-0.02	48	0.41
83%	67%	11%	19%	13%	72%	50%	62%	75%	72%	18%	2%	8

AI'd 1/12/26 to BROWN JYJ REDEMPTION Y1334. Breeding update will be available on sale day.

Consigned by Dayton Cattle



RREDS SENECA 731C, Maternal Grand sire of Lot 212

Want to keep up with fellow WV  
Red Angus breeders?



SCAN THE CODE TO JOIN  
THE CONVERSATION ON  
FACEBOOK

SCAN ME

SEMEN AVAILABLE

ORDER AHEAD - SAVE MONEY & PICK UP AT EXPO

LEM **WORLDWIDE** 1001 ET



ELITE LEVEL PHENOTYPE.  
REAL WORLD PERFORMANCE.



CED +15    BW -1.1    WW +72    YW +122

\$30/ UNIT | SAVE 10% ON YOUR ORDER

Dayton  
CATTLE

SCAN THE CODE TO ORDER ONLINE AND PICK  
UP AT WV BEEF EXPO  
VISIT [WWW.DAYTONCATTLE.COM](http://WWW.DAYTONCATTLE.COM) OR CALL US  
TO PLACE YOUR ORDER (304) 668-2102



## 213 WFFF BRITE 2413

COW 10-08-2024  
1AR / 100% AR

WFFF: 2413  
4981283

BROWN JYJ FUTURE G6171  
BROWN 3K FUTURE J6092  
FLYING K3 INDY ROSE E046  
BROWN PHENOMENAL Z7310  
CH BRITE 1614  
CH BRITE 910W



ProS	HB	GM
76	34	41
87%	82%	73%

CED	BW	WW	ADG	YW	MILK	HPG	CEM	STY	MRB	YG	CW	REA
10	-1.3	67	0.23	104	26	12	4	14	0.50	0.04	11	0.07
78%	59%	45%	60%	52%	47%	44%	91%	61%	37%	43%	86%	61%

Study the pedigree on this heifer and you will find Oracle on the top side and Commitment on the bottom side among others who have made significant genetic contributions to the Red Angus Breed. Sells Open and ready to breed to a bull of your choice.

Consigned by French Farms

## 214 WFFF TRILOGY 2504

COW 03-05-2025  
1AR / 100% AR

WFFF: 2504  
5084153

BROWN GTLS WAYMAKER G5505  
BROWN-CH WAYMAKER K5956  
CH REBEL 2018H  
GMRA TRILOGY O226  
JYJ MS TRILOGY E201  
BROWN MS P707 Y7694



ProS	HB	GM
124	63	61
23%	29%	30%

CED	BW	WW	ADG	YW	MILK	HPG	CEM	STY	MRB	YG	CW	REA
14	-4.2	73	0.23	109	34	15	9	15	0.84	0.09	19	0.12
33%	13%	27%	63%	43%	2%	9%	20%	53%	4%	71%	63%	51%

Check out the genetic merit and pedigree on this open yearling heifer! Her dam boasts a 376 day calving interval and 10GMPPA. On the top side her sire holds a 16 CED to 144 YW spread with exceptional fertility as well as top 4% Marb. Don't miss out on a Waymaker influenced female, his inventory is getting very limited. Sells Open.

Consigned by French Farms

BROWN-CH WAYMAKER K5956	\$Profit	\$Ranc h	\$Feed er	Fert
Reg # 4698181	\$16,839	\$99	\$94	2.46
% Rank	9%	4%	31%	2%

BROWN-CH WAYMAKER, Sire of Lot 214 K5956  
\$Profit Indexes

## 216 LSFVA MS FANTASTIC 2501

COW 03-31-2025  
1AR / 100% AR

LSFVA: 2501  
5212405

BIEBER DEEP END B597  
BROWN JRAR DEEP END H6631  
BROWN MS P707 Y6648  
BROWN BLW FANTASTIC C5959  
JYJ MS FANTASTIC F237  
JYJ MS PREMIER C124



ProS	HB	GM
144	69	75
9%	21%	11%

CED	BW	WW	ADG	YW	MILK	HPG	CEM	STY	MRB	YG	CW	REA
12	-3.0	75	0.32	126	8	17	8	15	0.67	-0.03	30	0.21
54%	26%	21%	10%	14%	23%	1%	27%	48%	15%	7%	22%	33%

A young female with a bright future, ranking 8% \$Profit and 11% GM. Her dam traces to the JYJ program, and her maternal grandsire is BROWN BLW FANTASTIC C5959, the maternal brother to Oracle and one of the most elite spread bulls in the breed. Fantastic combines top 5% BW with top 10% ADG, and this heifer follows suit with balanced, profitable genetics. Sells open.

Consigned by Long Stone Farm

## 215 LSFVA ELEANOR 2502

COW 04-01-2025  
1AR / 100% AR

LSFVA: 2502  
5212409

BIEBER DEEP END B597  
BROWN JRAR DEEP END H6631  
BROWN MS P707 Y6648  
HXC DAWSON 7003E  
LSFVA ELEANOR 2219  
CH ELEANOR 1724



ProS	HB	GM
135	66	68
14%	25%	19%

CED	BW	WW	ADG	YW	MILK	HPG	CEM	STY	MRB	YG	CW	REA
14	-2.8	73	0.29	119	27	16	8	15	0.69	-0.02	21	0.14
41%	32%	26%	22%	23%	36%	3%	39%	50%	13%	18%	56%	47%

From one of our favorite Cedar Hill cow families, this Eleanor daughter is bred for longevity and production. Her dam is one of our few HXC Dawson 7003E daughters, and her sire, BROWN JRAR DEEP END H6631, adds growth, carcass, and maternal strength. With solid ProS, HB, GM, WW, YW, and ADG EPDs, she's built to be a long-term producer. Sells open.

Consigned by Long Stone Farm

Can't attend the sale in person but plan to buy?

CONTACT US TO DISCUSS YOUR SHIPPING ARRANGEMENTS. ALL CATTLE MUST LEAVE THE SALE FACILITY ON APRIL 11.

Charlie French: (304) 299-4235  
Callie Dayton: (304) 668-2102  
Casey Wisch: (540) 454-2505



# LONG STONE FARM

LOVETTSVILLE, VIRGINIA

REGISTERED RED ANGUS MANAGED FOR MATERNAL  
AND CARCASS PERFORMANCE IN THE MID-ATLANTIC.



*We direct market beef and expect maternal performance in the field. Consistent and quality carcasses are vital to our business and we are proud to offer tested genetics that will elevate your herd.*

**CASEY WISCH:** 540.454.2505    **JUSTIN WISCH:** 703.999.6017  
[info@longstonefarmva.com](mailto:info@longstonefarmva.com)



**SELECT FEMALES ONLY OFFERED AT THE  
WEST VIRGINIA BEEF EXPO**

*herd sire influences:*  
LSF SRR FERTILITY 4476B  
BIEBER DEEP END B597  
PIE QUARTERBACK 789  
WEDEL CORNERSTONE 0224H

**OUR FEMALES MUST PERFORM ON FORAGE ONLY, RAISE CALVES WITHOUT ASSISTANCE AND HAVE EXCELLENT DISPOSITIONS.**

# 217 LSFVA DOMAIN JANIS 2321

COW 12-06-2023  
1AR / 100% AR

LSFVA: 2321  
4867806

BIEBER DEEP END B597  
BROWN JRAR DEEP END H6631



BROWN MS P707 Y6648  
3SCC DOMAIN A163  
3K DOMAIN JANIS G654  
3K PC JANIS D520

ProS	HB	GM
137	76	61
12%	13%	30%

CED	BW	WW	ADG	YW	MILK	HPG	CEM	STY	MRB	YG	CW	REA
13	-1.8	76	0.31	126	28	17	7	17	0.49	0.00	27	0.30
43%	50%	17%	12%	14%	25%	1%	56%	24%	39%	26%	30%	22%

A powerful age-advantaged bred heifer. We held her back to breed to a new herd bull who was later injured, which delayed her first calf — but the upside is she's grown and ready to produce great calves. She ranks 11% ProS, 10% HB, and sits in the top 20% for WW, YW, and ADG. A medium-bodied, productive female ready to go to work. Breeding status update will be provided sale day.

Consigned by Long Stone Farm

# 218 LSFVA ET MISS 2401

COW 04-11-2024  
1AR / 100% AR

LSFVA: 2401  
4986989

BIEBER DEEP END B597  
BROWN JRAR DEEP END H6631



BROWN MS P707 Y6648  
BIEBER SPARTACUS A193  
BIEBER ET MISS 460E  
BIEBER ET MISS 296C

ProS	HB	GM
114	36	78
36%	80%	9%

CED	BW	WW	ADG	YW	MILK	HPG	CEM	STY	MRB	YG	CW	REA
6	-0.4	87	0.34	142	26	12	5	12	0.73	0.10	38	0.16
95%	77%	3%	5%	3%	49%	45%	81%	81%	10%	76%	8%	42%

If you sell pounds and produce beef, don't overlook this age-advantaged heifer. Her dam is linebred to Bieber Rouse Samurai X22, and her sire, BROWN JRAR DEEP END H6631, delivers elite growth and carcass traits. She ranks 3% WW, 3% YW, 5% ADG, 11% GM, and brings the marbling and carcass weight needed to produce very marketable cattle. Breeding status update will be provided sale day.

Consigned by Long Stone Farm

# 219 LSFVA ENDORA 2437

COW 10-29-2024  
1AR / 100% AR

LSFVA: 2437  
5047593

BIEBER DEEP END B597  
BROWN JRAR DEEP END H6631



BROWN MS P707 Y6648  
WFL MERLIN O18A  
LSFVA ENDORA 2001  
CH ENDORA 1639

ProS	HB	GM
112	41	71
38%	72%	15%

CED	BW	WW	ADG	YW	MILK	HPG	CEM	STY	MRB	YG	CW	REA
15	-3.2	77	0.30	124	26	15	7	11	0.74	-0.07	21	0.20
30%	25%	17%	19%	17%	45%	8%	40%	88%	9%	5%	57%	36%

From the elite Endora cow family that is one of the most reliable maternal lines at Cedar Hill, this heifer blends carcass merit with fertility and structural integrity. Her sire, BROWN JRAR DEEP END H6631, ranks in the top 17% of the breed for WW, YW, ADG, Marbling and IMF — exactly the kind of spread genetics producers need. If you're building a cow herd with long-term value, this female checks every box. A'd to BROWN SLB QUARTERBACK K6627. Breeding status update will be provided sale day. Exposed to BROWN SLB CORNERSTONE L5551 from 3/1/26-4/5/26.

Consigned by Long Stone Farm



BROWN SLB QUARTERBACK K6627, A.I. SERVICE SIRE OF LOTS 218-222

# 220 LSFVA ROCKETTE 2438

COW 11-22-2024  
1AR / 100% AR

LSFVA: 2438  
5047589

BIEBER DEEP END B597  
BROWN JRAR DEEP END H6631



BROWN MS P707 Y6648  
WEDEL RANCHMASTER 9052G  
CH ROCKETTE 2137J  
CH ROCKETTE 2030

ProS	HB	GM
127	60	67
21%	36%	20%

CED	BW	WW	ADG	YW	MILK	HPG	CEM	STY	MRB	YG	CW	REA
15	-3.3	77	0.30	124	35	14	9	13	0.72	0.06	27	0.01
27%	23%	16%	19%	16%	1%	14%	14%	71%	11%	56%	32%	74%

Rockette females have been a cornerstone of the Cedar Hill program for years — we keep nearly all of them, and letting one go is never easy. Her dam is a RanchMaster daughter backed by generations of marbling strength, and her maternal grandsire, BROWN COMMITMENT S7206, has maintained progeny averages of 16% GM, 15% ProS and 1% MARB. This heifer carries that same genetic punch with the added growth and carcass value of our herd sire BROWN JRAR DEEP END H6631. A'd to BROWN SLB QUARTERBACK K6627. Breeding status update will be provided sale day. Exposed to BROWN SLB CORNERSTONE L5551 from 3/1/26-4/5/26.

Consigned by Long Stone Farm



Visit [redangus.org](http://redangus.org) to learn more about value added programs.

## 221 LSFVA MS MERLIN 2428

COW 09-30-2024  
1AR / 100% AR

LSFVA: 2428  
5047583



BIEBER DEEP END B597  
BROWN JRAR DEEP END H6631

BROWN MS P707 Y6648

WFL MERLIN O18A

JYJ MS MERLIN H361

JYJ MS NIGHTFOCUS F240

ProS	HB	GM
85	43	42
78%	68%	73%

CED	BW	WW	ADG	YW	MILK	HPG	CEM	STY	MRB	YG	CW	REA
14	-4.1	69	0.25	108	28	17	7	10	0.50	0.02	18	0.07
33%	14%	39%	49%	43%	28%	2%	49%	92%	37%	38%	66%	61%

A unique blend of LSF RHO Night Focus, Bieber Deep End, and WFL Merlin, this heifer brings a fresh pedigree with elite maternal value. Ranking in the top 2% of the breed for HPG, she is built to breed back, raise calves with consistency, and add length and performance to your cow herd. A true herd-builder with the kind of fertility that pays dividends. AI'd to BROWN SLB QUARTERBACK K6627. Breeding status update will be provided sale day. Exposed to BROWN SLB CORNERSTONE L5551 from 3/1/26-4/5/26.  
**Consigned by Long Stone Farm**

## 222 LSFVA LASS 2415

COW 09-11-2024  
1AR / 100% AR

LSFVA: 2415  
5047595



BIEBER DEEP END B597  
BROWN JRAR DEEP END H6631

BROWN MS P707 Y6648

TJS GATE KEEPER F106

BIEBER LASS 410J

BIEBER LASS 570E

ProS	HB	GM
118	47	71
31%	62%	15%

CED	BW	WW	ADG	YW	MILK	HPG	CEM	STY	MRB	YG	CW	REA
10	-1.5	69	0.24	109	25	16	5	13	0.55	-0.00	32	0.25
78%	56%	38%	50%	43%	56%	4%	58%	75%	29%	24%	19%	28%

The first Lass daughter we've ever brought to the Expo — and she's a good one. Her maternal side traces to the highly respected Lass cow family in the Bieber program, and her grandsire, TJS Gate Keeper F106, has been a reliable sire for added muscle and maternal strength. Her sire, BROWN JRAR DEEP END H6631, ranks in the top 20% of the breed and contributes elite fertility and carcass value, including 17% GM and 4% HPG. A balanced, maternal, and highly functional female. AI'd to BROWN SLB QUARTERBACK K6627. Breeding status update will be provided sale day. Exposed to BROWN SLB CORNERSTONE L5551 from 3/1/26-4/5/26.  
**Consigned by Long Stone Farm**

## 223 LSFVA DEL ZITA 2410

COW 09-07-2024  
1AR / 100% AR

LSFVA: 2410  
5047585



BIEBER DEEP END B597  
BROWN JRAR DEEP END H6631

BROWN MS P707 Y6648

IDRA DELIVERANCE 4006

FBF DEL ZITA 124-204

FBF ZITA 124

ProS	HB	GM
110	48	62
41%	59%	27%

CED	BW	WW	ADG	YW	MILK	HPG	CEM	STY	MRB	YG	CW	REA
10	-2.1	74	0.26	117	30	17	6	10	0.59	-0.02	25	0.31
74%	44%	23%	37%	28%	16%	1%	65%	91%	24%	19%	37%	20%

Profit starts with reproduction, and this Del Zita daughter offers valuable fertility on paper and in the field. Her dam is a moderate, easy-keeping cow with an excellent disposition who consistently weans some of our heaviest calves. Sired by BROWN JRAR DEEP END H6631, she adds carcass merit and maternal reliability in one efficient package. AI'd to BROWN SLB QUARTERBACK K6627 (RAAA#: 4718381). Breeding status update will be provided sale day. Exposed to BROWN SLB CORNERSTONE L5551 (RAAA#: 4853908) from 3/1/26-4/5/26.  
**Consigned by Long Stone Farm**



BIEBER DEEP END B597, PATERNAL GRANDSIRE OF LOTS 214-222

Can't make it to the sale? Bid online!

Visit **SALERING.LIVE** ahead of the sale to get your buyers number and tune in on April 11 around 10:30 a.m. to watch the sale and bid.



SALE  
RING  
*live*

## 224 MTNR LEGENDARY N251

BULL 02-26-2025 MTNR: N251  
2AR / 100% AR 5109717

TEHAMA TAHOE B767

BROWN IDEAL K1377

WFCC MS REVEL Y6648-F8097

BROWN PARAMOUNT X7879

CH JOAN 4003

CH JOAN 862U

ProS	HB	GM
176	85	92
1%	6%	3%

CED	BW	WW	ADG	YW	MILK	HPG	CEM	STY	MRB	YG	CW	REA
17	-4.8	80	0.32	131	26	14	8	20	0.85	0.14	44	0.28
14%	8%	10%	10%	9%	44%	92%	27%	3%	4%	90%	3%	24%

Herd Bull ALERT!!! If you're looking to add power, presence, and performance to your program, this bull deserves your attention. He's an ultra-masculine, heavy-muscled standout with a clean, attractive front and rock-solid structure from the ground up—standing square and true on all four. He boasts a big, wide top packed with muscle and carries it into a deep, bold rib and a thick, round midsection that screams capacity and productivity. His shoulder blends smoothly into the neck and ribs, giving him both balance and eye appeal. This is a bull that's been a standout since day one, turning heads every step of the way. A complete package of muscle, soundness, and style—one that's ready to make a real impact in the pasture and the calf crop.

**Consigned by Mountaineer Red Angus**



BROWN IDEAL K1377, SIRE OF LOT 223

## 225 MTNR FIRE COUNTRY N252

BULL 02-28-2025 MTNR: N252  
2AR / 100% AR 5109721

FEDDES BRUNSWICK D202

BROWN PRA JOINVENTURE J5903

PELTON MS AUTHORITY 4019G

G A R SURE FIRE

MTNR BLACK ONYX F8084-K2202

WFCC MS DOMAIN 4003-F8084

ProS	HB	GM
192	100	92
1%	1%	2%

CED	BW	WW	ADG	YW	MILK	HPG	CEM	STY	MRB	YG	CW	REA
13	-1.7	77	0.30	124	28	15	7	22	0.86	0.03	35	0.54
43%	52%	16%	19%	16%	25%	8%	55%	1%	4%	39%	11%	3%

This bull is built right from the ground up, combining a sound, durable structure with impressive muscle and eye-catching balance. He carries added length through his spine, giving him a powerful, athletic look, while his shoulder lays smoothly into his rib cage for seamless front-end design. A wide, straight, and level top flows into a deep, wide middle, offering the kind of capacity, strength, and consistency serious cattlemen look for. This is a bull that's made to work, built to last, and designed to add quality to the next generation.

**Consigned by Mountaineer Red Angus**



BROWN PRA JOINTVENTURE J5903, SIRE OF LOT 224



You know your business.  
We know how to help insure it.

With everything you need to accomplish in a day, insurance protection for your business might be the last thing on your mind. You do recognize, however, that a one-size-fits-all insurance policy isn't the smart way to run a business. Our AGRIBUSINESS INSURANCE PROGRAM can provide you with a flexible farm package that allows you to customize a policy to match your individual needs.

CONTACT ME TO FIND OUT MORE.

Locke Wysong, Agent  
112 W. Congress St.  
Charles Town, WV 25414  
Locke.Wysong@American-National.com  
304-671-2341

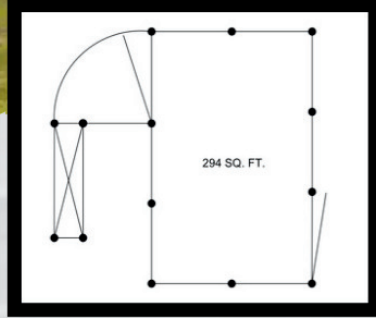
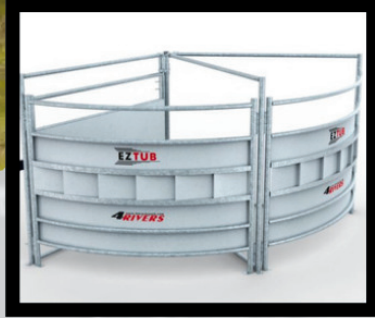
**Farm Family**  
INSURANCE

FARM & RANCH | BUSINESS | LIFE



**4 RIVERS**

# BUILT TO WORK AS HARD AS YOU DO



**SQUEEZE CHUTES & HEAD GATES**

**PANELS & GATES**

**EZ TUB & SWEEPS**

**CORRAL DESIGNS**

## AND SO MUCH MORE... CONTACT YOUR LOCAL DISTRIBUTOR

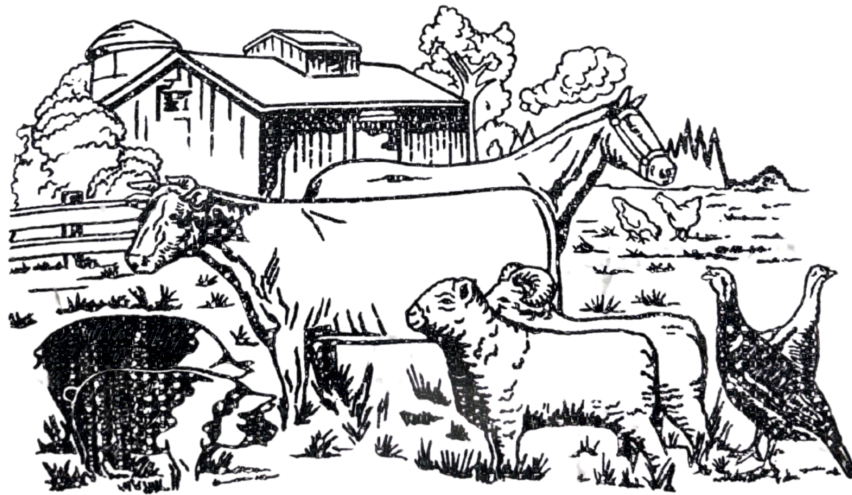


**ROBERT OAKLEY**  
64753 LYDICK RD.  
QUAKER CITY, OH 43773  
740-260-3803



**VISIT THE 4 RIVERS RANCH EQUIPMENT WEBSITE TO LEARN MORE!**

# WARD FARM SUPPLY

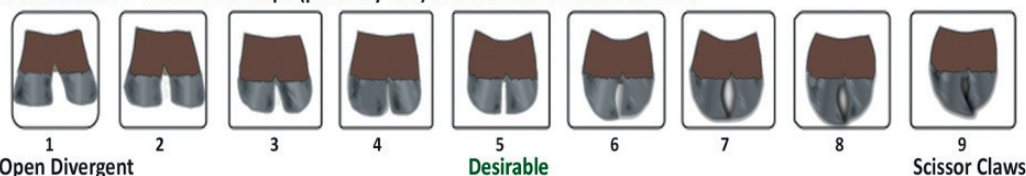


310 HICKORY ST.,  
PARKERSBURG, WV  
(304) 485-7133

## Foot and Leg Scoring Reference

### CLAW SHAPE

Reference: Shape (primarily curl) and unevenness of the claw set.



### FOOT ANGLE

Reference: Strength of pastern, depth of heel and length of foot.



### REAR LEG SIDE VIEW

Reference: Angle measured at the front of the hock.



## RED ANGUS GUIDE TO EPDS

RedAngus.org

**ProS** – Profitability and Sustainability is an all-purpose index that predicts average economic differences in all segments in the beef supply chain. This index is a combination of the breeding objectives modeled in the HerdBuilder and GridMaster selection indexes. In this index, replacement heifers are retained from within the herd and all remaining progeny are fed out to slaughter and sold on a quality-based grid. Traits included in this index include CED, ADG, HPG, STAY, MW, DMI, CW, MARB, REA and Fat. **Index | Dollars per Head | Higher Value**

**HB** – HerdBuilder is a maternal selection index that predicts the economic differences of animals for traits that are important from conception through weaning. HB is calculated based on the scenario that bulls are mated to heifers and cows, replacement heifers are retained and all remaining progeny are marketed at weaning. This index is a combination of CED, CEM, WW, Milk, MW, HPG and STAY. **Index | Dollars per Head | Higher Value**

**GM** – GridMaster is a selection index that predicts the average economic difference of non-replacement calves through the post-weaning phase of production. GM places selection pressure on growth, feed yard performance and carcass traits. GM is calculated based on the scenario that progeny are fed out to slaughter and marketed on a quality-based carcass grid. This index is a combination of ADG, CW, DMI, MARB, Fat and REA. **Index | Dollars per Head | Higher Value**

**CED** – Calving Ease Direct predicts differences in the percent of calves born unassisted out of 2-year-old dams. **Percent | Higher Value**

**BW** – Birth Weight predicts differences in actual birth weight of progeny. **Pounds | Lower Value**

**WW** – Weaning Weight predicts differences in 205-day weaning weight. **Pounds | Higher Value**

**YW** – Yearling Weight predicts differences in 365-day yearling weight.

**Pounds | Higher Value**

**ADG** – Average Daily Gain predicts differences in weight gain between 205 and 365 days of age. **Pounds | Higher Value**

**DMI** – Dry Matter Intake predicts differences in daily feed intake as measured in a feedlot during the post-weaning period. **Pounds | Lower Value**

**MILK** – Milk predicts differences in weaning weight attributed to the milking ability of the animal's daughters. **Pounds | Higher Value**

**ME** – Maintenance Energy predicts the difference in maintenance energy requirements. **Mcal per Month | Lower Value**

**HPG** – Heifer Pregnancy predicts differences in the percent of daughters who are able to conceive and calve at 2 years of age following exposure to breeding. **Percent | Higher Value**

**CEM** – Calving Ease Maternal predicts differences in the percent of daughters who are able to calve unassisted as 2-year-old heifers. **Percent | Higher Value**

**STAY** – Stayability predicts differences in the ability of an animals' retained daughters to remain productive in the herd – calve every year – through 6 years of age. **Percent | Higher Value**

**MARB** – Marbling predicts differences in marbling score – amount of intramuscular fat measured at the 13th rib. **Marbling Score Units | Higher Value**

**YG** – Yield Grade predicts differences in USDA Yield Grade, which is calculated using CW, REA and Fat. **Yield Grade Units | Lower Value**

**CW** – Carcass Weight predicts differences in actual hot carcass weight. **Pounds | Higher Value**

**REA** – Ribeye Area predicts differences in square inches of ribeye area measured at the 13th rib. **Square Inches | Higher Value**

**FAT** – Fat predicts differences in the depth of backfat measured between the 12th and 13th ribs. **Inches | Lower Value**



# FREE ONLINE GRAZING SCHOOL

For Farmers and Grazing Professionals

Learn from your peers, agency professionals, and academic instructors at your own pace on the topics of grazing techniques, soil health, weed control, forage health, and nutrient management.



## FARMER TESTIMONIALS

*Putting conservation into action*

Hear directly from West Virginia farmers who are putting conservation into action. These stories showcase how sustainable grazing practices benefit the land, the livestock, and the people who care for them, offering inspiration and insight from those leading the way.



## FARMER LEARNING PATHWAY

*Lessons for improvement*

Designed for producers and landowners, this pathway offers practical, easy-to-understand lessons to help improve pasture productivity, enhance livestock health, and protect natural resources. Learn from experts and peers about real-world practices that strengthen both your farm and the land you depend on.

## TRAIN-THE TRAINER PATHWAY

*Tools to teach and support*

This pathway equips agricultural educators, technical specialists, and conservation partners with the tools and knowledge to effectively assist farmers in improving grazing management. Through a series of focused learning modules, participants gain strategies to teach and support on-the-ground conservation practices.



# West Virginia Simmental Association

**Saturday – April 11, 2026      Sale – 12:30 PM**  
**Auctioneer: Col. John L. Spiker 184-26**  
**(304) 677-0255**

Fellow Cattle Breeders:

We are pleased to offer the Beef Expo Catalog for your review. If you have attended past sales, we believe that you will agree that “quality” has been the consigners’ main interest and this year’s lots will be no exception! We look forward to meeting you at the sale. As members and consigners, we appreciate your faith in the genetics of the Simmental Breed.

Please note the consigners list is on the following page. Any inquires concerning any lot will be welcomed by these breeders.

We would like to thank all consigners for their cooperation and all prospective buyers for their support of the sale.

Cattle sell under terms and conditions of the American Simmental Association.

## Thank You 2025 Buyers

Jonathan Riggelman, Valley Head, WV  
Chris Brown, Fairmont, WV  
Michael McFee. Eizabeth, WV  
Jerod Duelley, Smithville, WV  
Johnathan Cheslock, Morgantown, WV  
Emma Sparks, Summersville, WV  
Frank Bolyard, Thorton, WV  
Jason Ely, Claysville, PA  
Stephen Luikart, Cross Lanes, WV  
Thomas Cook, Durbin, WV  
Aaron Cook, Saltville, VA  
James Meadows, Shady Spring, WV

Kevin Mullins, Franklin, WV  
Brandon Ruddle, Franklin, WV  
Robert Morrison, Bloomingdale, WV  
Logan Campbell, Harrisville, WV  
Twain Beal, Mt. Savage, MD.  
Charles Tennant, Burton, WV  
Charles Huffman, Walton, WV  
Greg Mitchell, Upper Tract, WV  
Roy Ealy, West Finley, PA  
Amy Kisamore, Riverton, WV  
Todd Payne, Buckhannon, WV  
Tyler Villers, Elizabeth, WV

Sale Chairman  
Bob Nutter  
304-203-9118

## Consigners

**Barna Vista Farm  
Landon & Ashley Barnette  
590 Tug Fork Road  
Ripley, WV 25271  
304-532-6731  
Lots 401 -402**

**Classic Farm  
Chris & Kellee Brown  
Endeavor Lane  
Fairmont, WV 26554  
304-290-8383  
Lots 403 – 411**

**Cold Spring Farm  
Joe & Jessica Simcoe  
216 Cold Spring Road  
Morgantown, WV 26501  
304-376-7904  
Lots 412 -415**

**CWL Simmentals  
Charles & Whitney Lee  
3896 Freedom Highway  
Fairmont, WV 26554  
304-612-4074  
Lots 416 -417**

**Diamond D Farm  
Adam & Sarah Goldizen  
896 Pumpkin Road  
Petersburg, WV 26847  
304-257-0262  
Lots 418 – 420**

**Longview Land & Cattle  
Mike & Diane Hatton  
503 Longview Drive  
Sugar Land, TX 77478  
713-504-2521  
Lots 421-422**

**Stanfield Farms  
Harvey & Garrett Stanfield  
298 Stanfield Road  
Manchester, OH 45144  
Harvey 606-564-0400 Garrett – 606- 375-2794  
Lots 423 - 429**

<p><b><u>BVSF Thor M67</u></b> <span style="float: right;"><b><u>Lot 401</u></b></span></p> <p>3/4 SM 7/32 AN 1/32 LM Bull <span style="float: right;">Polled</span>            ASA: 4634344 Tattoo: M67 Birth Date: 12/22/24            Consigner: Barna Vista Farm</p> <p style="text-align: center;">Jass On The Mark 69D            BV Flash L9            TCC4 Trixy 910G</p> <p style="text-align: center;">BV lock Down            BVSF Crown Royal            BV Lurie F30</p> <p>EPD's CE 10.6 BW .9 WW 70 YW 101.7 MCE 5.2 MM 18.7 MWW 53.5</p> <p>M67 is easy to find when you enter the pen. A solid black body with a white face with a ton of rib and dimension. This big boy is a son of BV Flash that we purchased from Buena Vista Simmentals. He took his good looks and stout frame from his sire. His calving ease and growth should a plus on every ones watch list.</p>	<p><b><u>BVSF Scarlett N6</u></b> <span style="float: right;"><b><u>Lot 402</u></b></span></p> <p>Open 3/4 SM 1/4 AN Heifer <span style="float: right;">Polled</span>            ASA 4634343 Tattoo: N6 Birth Date: 6/15/25            Consigner: Barna Vista Farm</p> <p style="text-align: center;">Jass On The Mark 69D            BV Flash L9            TCC4 Trixy 910G</p> <p style="text-align: center;">AHZ Dark Moon F823            Infinity Plus 1            CCL1 Infinity G320</p> <p>EPD's CE12.2 BW .4 WW 69.8 YW 104 MCE 5.6 MM 21.3 MWM 56.2</p> <p>This black beauty with distinct white markings om her face is the daughter of BV Flash a bull we purchased from Buena Vista Simmentals and is the daughter of Infinity Plus 1. We think the maternal instincts will be top notch. She is definitely one to add to your growing herd.</p>
<p><b><u>Classic Lomax N308</u></b> <span style="float: right;"><b><u>Lot 403</u></b></span></p> <p>Purebred Bull <span style="float: right;">Polled</span>            ASA:4582631 Tattoo: N308 Birth Date: 1/26/25            Consigner: Classic Simmental Farm</p> <p style="text-align: center;">Hook's Full Figures 11F            Five Star Jackson J10            KBHR F316</p> <p style="text-align: center;">SSC Steel A Legend 25A            Miss Sniper 51F            DRD Miss Pistol</p> <p>EPD's CE 14 BW .6 WW 81.2 YW 117.2 MCE 8.6 MM 23.8 MWM 64.3</p> <p>Lomax is a nice bull that will be ready to start breeding right away. He has good numbers and backed by a good cow family. Lomax should sire calves that will really push the scale down.</p>	<p><b><u>Classic Averly N100</u></b> <span style="float: right;"><b><u>Lot 404</u></b></span></p> <p>Open 3/8 SM 1/2 AR 1/8 AN <span style="float: right;">Polled</span>            ASA:4539106 Tattoo: N100 Birth Date: 4/30/25            Consigner: Classic Simmental Farm</p> <p style="text-align: center;">BUF CRK Therightkindu199            Bow CRK Heavily Armed 801F            Twin Ponds HI-RB-LS 408</p> <p style="text-align: center;">W/C Turnpike 4008G            Classic MS Throwdown F100            MS Bayley</p> <p>EPD's CE 10.9 BW .6 WW 62.4 YW 94.7 MCE 7 MM 22.5 MWM 53.6</p> <p>Here's a solid black really complete made heifer out of a top cow. She possesses a soft look and is very smooth in her makeup. We have calved several daughters of Bow Crk Heavily Armed and they all have tremendous udders.</p>
<p><b><u>Classic Matilda N44</u></b> <span style="float: right;"><b><u>Lot 405</u></b></span></p> <p>Open 3/8 SM 1/2 AR 3/32 MA 1/32 AN <span style="float: right;">Polled</span>            ASA:4638863 Tattoo: N44 Birth Date: 4/26/25            Consigner: Classic Simmental Farm</p> <p style="text-align: center;">W/C Loaded Up 1119Y            Bow CRK Heavily Armed 801F            Twin Ponds HI-RB-LS 408</p> <p style="text-align: center;">Mr NLC Upgrade U8676            Crum Cheesegrade 556C            Crum Cheesespread 04X</p> <p>EPD's CE 10.8 BW .8 WW 63.4 YW 93.7 MCE 6.9 MM 23 MWM 54.7</p> <p>This is a moderate framed, big sided heifer with a lot of structural integrity. The dam of this heifer out produces herself every year.</p>	<p><b><u>Classic Blooming Rose N39</u></b> <span style="float: right;"><b><u>Lot 406</u></b></span></p> <p>Open Purebred Heifer <span style="float: right;">Polled</span>            ASA:4638861 Tattoo: N39 Birth Date: 3/28/25            Consigner: Classic Simmental Farm</p> <p style="text-align: center;">VCL Foresight            STCC Tecumseh 058J            HF Serena</p> <p style="text-align: center;">JSUL Something About Mary 8421            JSUL Red Rosie 2304K            Peine/GS Rosie 677D</p> <p>EPD's CE 6.7 BW 3.4 WW 79.7 YW 118.1 MCE 2.7 MM 18.8 MWM 58.7</p> <p>This is a stout boned, long bodied heifer with a great disposition backed by a dam that was no stranger to the backdrop. This heifer has style and a beautiful front end.</p>

<p><b><u>Classic Sweet Thing N31C</u></b> <b><u>Lot 407</u></b></p> <p>Open Purebred Heifer Polled  ASA: 4638862 Tattoo: N31C Birth Date: 3/23/25  Consigner: Classic Simmental Farm</p> <p>W/C Relentless 32C  JSUL Something About Mary 8421  JBSF Proud Mary</p> <p>Cherokee Rooster  Cherokee Unique  Lazy H Burn Right Y132</p> <p>EPD's 11.3 BW .7 WW 69.6 YW 107.4 MCE 4.1 MM 13.7 MWW 48.3  This is a very attractive baldy heifer with a soft middle and beautiful sweep to her rib. Her full sisters have been topping many sales the last 2 years, including the PA Fall Classic, Classic Farm Fall Showcase, Classic Farm Spring Fever and the WV Livestock Roundup.</p>	<p><b><u>Classic Rosebud N734</u></b> <b><u>Lot 408</u></b></p> <p>Open Purebred Heifer Polled  ASA: 4638865 Tattoo: N734 Birth Date: 3/18/25  Consigner: Classic Simmental Farm</p> <p>THSF Lover boy B33  Rose Lover Boy 342L  Surrender 042J</p> <p>CCR Wide Range 9005A  Classic Embree G73A  Classic Meyer Dream B734</p> <p>EPD's 11.6 BW -.2 WW 69.2 YW 97.6 MCE 6.3 MM 16.4 MWW 51</p> <p>A really attractive well balanced heifer out of our really good young Lover Boy son that we are really excited about. Rosebud has a good disposition and should make a productive cow for years to come. She is a very long bodied and square made heifer.</p>
<p><b><u>Rosie's Tecumseh Girl 939N ET</u></b> <b><u>Lot 409</u></b></p> <p>Open Purebred Heifer Polled  ASA: 4634066 Tattoo: 939N Birth Date: 2/20/25  Consigner: Classic Simmental Farm</p> <p>VCL Foresight  STCC Tecumseh 058J  HF Serena</p> <p>JSUL Something About Mary 8421  JSUL Red Rosie 2304 K  Peine/GS Rosie 677D</p> <p>EPD's 6.7 BW 3.3 WW 79/7 YW 117.7 MCE 2.8 MM 18.7 MWW 58.4</p> <p>A really stout made heifer from our Rosie Cow and popular Tecumseh bull. She has a sweet disposition and will make a nice cow down the road.</p>	<p><b><u>Classic Francine N372</u></b> <b><u>Lot 410</u></b></p> <p>Open 5/8 SM 1/8 AN 1/8 CH 1/8 CS Heifer Polled  ASA: 4638864 Tattoo: N372 Birth Date: 1/14/25  Consigner: Classic Simmental Farm</p> <p>Classic MR Upgrade A75  Classic Silverdo  Smoke</p> <p>Classic Punk F101  K172  CMFM Perfection 414C</p> <p>EPD's 12.3 BW 0 WW 65 YW 93.5 MCE 6.2 MM 19.3 MWW 51.6</p> <p>This is a long bodied, level topped heifer that goes back to a very nice cow we bought from Silver Towne dispersal. That cow has had several daughters and they have proven their worth over and over.</p>
<p><b><u>Classic Jaclyn N692</u></b> <b><u>Lot 411</u></b></p> <p>Open Purebred Heifer Polled  ASA: 4589791 Tattoo: N692 Birth Date: 1/8/25  Consigner: Classic Simmental Farm</p> <p>Hook's Full figures 11F  Five Star Jackson J10  KBHR F316</p> <p>HPF Quantum Leap Z952  Classic Mystique J292  Classic MS Bosh</p> <p>EPD's 14.8 BW -.5 WW 75.1 YW 106.4 MCE 10.6 MM 25.5 MWW 62.9</p> <p>This is a really complete red 5 Star Jackson heifer. Jaclyn stems from one of our longest running cow families. She is as long as a well rope and straight in her lines. She will make an excellent cow.</p>	<p><b><u>Classic Jess K107</u></b> <b><u>Lot 412</u></b></p> <p>Bred Purebred Cow Polled  ASA: 4090402 Tattoo: K107 Birth Date: 2/28/22  Consigner: Cold Spring Farm</p> <p>W/C Bullseye 3046A  Classic Punk F101  Classic Rosie Rose C101</p> <p>SVF Steel force S701  Classic Believer H107  STF/HRLR Believer DYT7</p> <p>EPD's 14 BW -.9 WW 64 YW 92.1 MCE 5.2 MM 18.6 MWW 50.5  Jess is a great mother with plenty of milk. She has produced 2 great heifers for us and her next one will do good too. She has a beautiful white face and a great disposition. Pasture exposed 4/18 thru 5/31/25 to BV On the Mark H29. ASA# 3892641. Will calve by sale day.</p>

<p><b><u>Charmont Harmony</u></b> <span style="float: right;"><b><u>Lot 413</u></b></span></p> <p>Bred Purebred Cow <span style="float: right;">Polled</span>  ASA: 3849302 Tattoo: H115 Birth Date: 10/15/20  Consigner: Cold Spring Farm</p> <p style="padding-left: 40px;">Sandeem Upper Class 2386  Yardley Top Notch C371  HSF Victoria P30</p> <p style="padding-left: 40px;">ACW Ironhide 359Y  Charmont Mirage F115  Charmont Foxy lady Z111</p> <p>EPD's 7.1 BW 1.5 WW 64.3 YW 93.4 MCE 2 MM 22.9 MWW 55</p> <p>Harmony is a big middle high volume cow that we have had great success with. We decided to bring one of our best and give someone a chance to put this great cow in their herd. Pasture exposed 4/18 thru 5/31/25 to BV On The Mark H29. ASA# 3892641. Will calve by sale day.</p>	<p><b><u>Cold Spring Farm Fortune</u></b> <span style="float: right;"><b><u>Lot 414</u></b></span></p> <p>Bred Purebred Heifer <span style="float: right;">Polled</span>  ASA: 4480216 Tattoo: M021 Birth Date: 5/5/24  Consigner: Cold Spring Farm</p> <p style="padding-left: 40px;">Classic Crimson G981  Cold Springs Farm Red Man  Classic Bailey D41</p> <p style="padding-left: 40px;">STF Double Image CU26  FSF Destiny  PVSM High Octane</p> <p>EPD's 6.5 BW 3 WW 69.3 YW 101.4 MCE 3.6 MM 18.8 MWW 53.3</p> <p>Fortune is a very complete made red heifer. She is sired by Cold Spring Farm Red Man which has produced many great females for us and her dam is a super solid cow we were able to purchase from Frosty Spring Farm. This heifer has a great disposition and lots of growth. She will be bred to PVSM Victorious by sale time. Contact us with questions.</p>
<p><b><u>Cold Spring Dolly</u></b> <span style="float: right;"><b><u>Lot 415</u></b></span></p> <p>Open Purebred Heifer <span style="float: right;">Polled</span>  ASA: 4621887 Tattoo: N21 Birth Date: 2/19/25  Consigner: Cold Spring Farm</p> <p style="padding-left: 40px;">BAR CK Red empire 9153G  Classic Empire L51  FSF Bridget</p> <p style="padding-left: 40px;">STF Double Image CU26  FSF Destiny  PVSM High Octane</p> <p>EPD's CE 14.2 BW -1 WW 59.3 YW 89.6 MCE 7.5 MM 24.5 MWW 54</p> <p>A solid red heifer that is very feminine but carries plenty of pounds. If your looking for a heifer to put a big middle in your calves and pounds on the rail we think she will do the job.</p>	<p><b><u>CWL Hiro N5</u></b> <span style="float: right;"><b><u>Lot 416</u></b></span></p> <p>Purebred Bull <span style="float: right;">Polled</span>  ASA: 4588502 Tattoo: N5 Birth Date: 2/28/25  Consigner: CWL Simmentals</p> <p style="padding-left: 40px;">Felt Perseverance 302F  Classic Hiro L359  Classic MS Force B12</p> <p style="padding-left: 40px;">TWS LoverBoy H58  CWL Braelyn L5  BRI 952</p> <p>EPD's CE 10.4 BW 2.2 WW 75.6 YW 114.2 MCE 5.2 MM 19.2 MWW 55.8</p>
<p><b><u>CWL Lorena L10</u></b> <span style="float: right;"><b><u>Lot 417</u></b></span></p> <p>Bred Purebred Heifer <span style="float: right;">Polled</span>  ASA: 4380863 Tattoo: L10 Birth Date: 12/03/23  Consigner: CWL Simmentals</p> <p style="padding-left: 40px;">Erixon Bitten 203A  SAS Copperhead G354  SAS Miss Araphaoe</p> <p style="padding-left: 40px;">WLE Uno Mas X549  Miss Uno Mas  Driving Miss Millie</p> <p>EPD's 6.1 BW 3.2 WW 92.7 YW 130 MCE 1.8 MM 23.9 MWW 70.1</p> <p>Pasture exposed 4/22 thru 8/30/25 to Classic Make Note M09 (Angus AAA# 21043290). Classic Make Note M09 has been foundation registered with ASA but have not received the number.</p>	<p><b><u>Diamond G Payright N205</u></b> <span style="float: right;"><b><u>Lot 418</u></b></span></p> <p>Purebred Bull <span style="float: right;">Polled</span>  ASA: 4631668 Tattoo: N205 Birth Date: 2/7/25  Consigner: Diamond G Farm</p> <p style="padding-left: 40px;">STF SMJ Payroll  PCSC Payright 5L  PCSC Burn Tight 5B</p> <p style="padding-left: 40px;">WHF/JS/CCS Double Up G365  WHF Lori Beth 381J  WHF Lori Beth 382G</p> <p>EPD's CE 9.2 BW 1.6 WW 75.4 YW 107.3 MCE 4.7 MM 19.8 MWW 57.4</p> <p>Here is a long sided, attractive, square hipped bull that will add some growth in his calves. His mother goes back to Double Up G365. N205 is solid black, very docile.</p>

<p><b><u>Diamond G Dianna M161</u></b> <b><u>Lot 419</u></b></p> <p>Bred Purebred Heifer Polled  ASA: 4530358 Tattoo: M161 Birth Date: 9/7/24  Consigner: Diamond G Farm</p> <p>W/C Executive Order 8543B  W/C Double Down 5014 E  W/C Miss Werning 5014C</p> <p>W/C Executive Order 8543B  SVJ Dianna E1341  SVJ Miss Elza B1341</p> <p>EPD's 11.6 BW -.2 WW 73 YW 103.7 MCE 2.5 MM 19.7 MWW 56.1</p> <p>Dianna M161 stems from our most proven cow in the herd, maternal genetics are strong with this one. She sells bred to Lover Boy ASA# 2983443 on 1/27/26.</p>	<p><b><u>Diamond G Trudy N232</u></b> <b><u>Lot 420</u></b></p> <p>Open Purebred Heifer Polled  ASA: 4631669 Tattoo: N232 Birth Date: 4/1/25  Consigner: Diamond G Farm</p> <p>SJF SMJ Payroll  PVSC Payright 5L  PCSC Burn Right 5B</p> <p>WHF Bluegrass F45  WHF Trudy 35K  WHF Trudy 35Y</p> <p>EPD's CE 8.4 BW 2.5 WW 80.3 YW 115.2 MCE 5.7 MM 20.6 MWW 60.7</p> <p>Here is a stylish blazed faced open heifer who has quickly become a favorite in the heifer pen due to her impressive growth since weaning. She comes from a very good productive cow backed by Wayward Hill Farm genetics.</p>
<p><b><u>Longview Aurora</u></b> <b><u>Lot 421</u></b></p> <p>Open Purebred Heifer Polled  ASA:4610607 Tattoo: N13 Birth Date: 4/14 25  Consigner: Long View Land and Cattle</p> <p>W/C Bet On Red 481H  GTV Parker  JSUL Broker's Lady 7245E</p> <p>CCR Cowboy Cut 5048Z  Longview Farrah  Longviews Honey Bee</p> <p>EPD's 6.6 BW 2.8 WW 77.7 YW 111 MCE 3.4 MM 24.8 MWW 63.6</p> <p>From the heart of our cow herd, Cowboy cut and Joker says power and productivity. From the first crop our new Bet On Red son. This one was hard to part with but we wanted to bring a good one. Aurora will work in the show ring and in the pasture.</p>	<p><b><u>Longview Emma N2</u></b> <b><u>Lot 422</u></b></p> <p>Open ¼ SM 1/8 AN 3/32 MA 1/32 CS Polled  ASA: 4610609 Tattoo: N2 Birth Date: 2/21/25  Consigner: Long View Land and Cattle</p> <p>TJSC King Of Diamonds  GTV Tulsa King  Lazy H Bunice X110</p> <p>GTV Skittles  Longview Glitter  Longview Cookie</p> <p>EPD's CE 10.8 BW .2 WW 66.4 YW 95 MCE 4.5 MM 16.8 MWW 49.9</p> <p>If you're looking for one with chrome, this heifer will fill the bill. Out of a first calf heifer, this girl is long sided with a great hip.</p>
<p><b><u>SSF/HLCS Keep the Change S01N</u></b> <b><u>Lot 423</u></b></p> <p>¾ SM ¼ Bull Polled  ASA: 4512626 Tattoo: S01N Birth Date: 1/24/25  Consigner: Stanfield Farms</p> <p>WLE Copacetic E02  Holtkamp CLAC Change Is Coming  Miss Sugar Shake 84D</p> <p>Hagan Hush Money 647G  SSF Pay The Lady S30K  MCX Power Puff</p> <p>EPD's CE 8.9 BW 1.2 WW 67.4 YW 93.1 MCE 5.6 MM 14.4 MWW 48</p> <p>Keep The Change is a rugged built, big outlined bull, with plenty of length and extension. He comes on big feet and legs and is ready to work. He was part of our show ring this past year and was campaigned by Hailey Cornett the backdrop as the Grand Champion AOB Bull at the 2025 Ohio State Fair. DNA Verified – Herd Sire Approved.</p>	<p><b><u>BTYL How The Cookie Crumbles 641K</u></b> <b><u>Lot 424</u></b></p> <p>Bred Purebred Cow Polled  ASA: 4286436 Tattoo: 641L Birth Date: 6/1/23  Consigner: Stanfield Farms</p> <p>W/C Double Down 5014E  WHF/JS/CCS Double Up G365  WHF Summer 365  WLE Copacetic E02  BTYL Blue Cheese 413J  Miss Werning KP 8543U</p> <p>EPD's CE 8 BW 1.8 WW 81.6 YW 118 MCE 4.8 MM 18.2 MWW 58.9</p> <p>We selected Crumb from the Baty Livestock program as an open heifer and she spent time in the show barn. She is sired by the calving ease Double up and out of a direct daughter of the legendary 8543U donor. Sires from this popular donor include Bankroll, Relentless, Executive Order and more. Crumb was often described in the ring as attractive from the side, smooth and correct angles and flexible in motion. She is AI'd on 11/18/25 to sexed heifer semen to Wheatland Man O'War 907G for an early fall calf. (ASA 3695876) PE 12/15/25 to 1/15/26 to B&amp;K/IVS/WCS County Line 83J. (ASA# 3969305)</p>

<p><b><u>HILB/Jass Loves Her Rosae</u></b> <b><u>Lot 425</u></b></p> <p>Bred Purebred Cow Polled  ASA: 4257085 Tattoo: K806W Birth Date: 2/12/22  Consigner: Stanfield Farms</p> <p>W/C United 956Y  W?C Executive Order 8543B  Miss Werning KP 8543U</p> <p>Mr Hoc Broker  HILB Crazy N Long A475S  SS Babys Breath PO35</p> <p>EPD's CE 12.1 BW -1.7 WW 65.1 YW 91.9 MCE 5.3 MM M20.6 WW 53  Rosae represents one of the most proven and dominant pedigrees in the Hilbrands Cattle Company program in the past decade. Few females have achieved the same level of success in production as the now deceased Crazy N Love donor. Opportunities to purchase daughters are now limited and this red hided daughter out of Executive Order could be the ticket .She is moderate framed, flexible in her build and ties well at the top of her shoulder. PE 11/8/25 to 1/15/26 to B&amp;K/IVS/WC County Line 83J (ASA# 3969305)</p>	<p><b><u>SSF Black Cherry S31 N</u></b> <b><u>Lot 426</u></b></p> <p>Open ¼ SM ¼ BR Heifer Polled  ASA: 4630293 Tattoo: S31N Birth Date: 9/3/25  Consigner: Stanfield Farms</p> <p>WLE Big Iron E205  B&amp;K/IVS/WCS County Line 83J  Tylertown Alley Cat</p> <p>TK/FCC The Muffin Man  SSF Black Cherry S01J  Hagan Cherry Bomb 06C</p> <p>EPD's CE 8.7 BW 1.4 WW 73.2 YW 102 MCE 5.2 MM 19.9 MWW 56.4  S31N is a fall born female with an extremely interesting twist for this part of the country. She stems from our small but powerful Simbrah herd. Her maternal granddam was Reserve National Champion at the 2016 AJSA National Classic. She if functional in her build and constructed well from the ground up. These cattle are durable, heat tolerate and designed to last in our environment. If you have a junior interested in the show ring, she could be a neat one to campaign in the AOB division for the nest two years.</p>
<p><b><u>SSF Empriss S33N</u></b> <b><u>Lot 427</u></b></p> <p>Open Purebred Heifer Polled  ASA: 4630294 Tattoo: S33N Birth Date: 8/2/25  Consigner: Stanfield Farms</p> <p>WLE Big Iron E205  B&amp;K/IVS/WCS County Line 83J  Tylertown Alley Cat</p> <p>MG/GSC Authority W14C  SSF Empriss S09J  HPF Empriss 326D</p> <p>EPD's CE 9.3 BW 1.4 WW 77.7 YW 114.2 MCE 4.7 MM 21.1 MWW 59.7  From the same cow family as the S10N heifer, this star headed purebred option is the longer, more extended version in a purebred package. She is sound at the surface, has plenty of growth for her age, ties high out of her shoulder and is extended throughout the front end. The County Line daughters have been some of our favorites and this one descends from the successful Empriss line on the bottom side of her pedigree.</p>	<p><b><u>SSF Crimson Impression S16N</u></b> <b><u>Lot 428</u></b></p> <p>Open ¼ SM ¼ AN Heifer Polled  ASA: 4606999 Tattoo: S16N Birth Date: 5/25/25  Consigner: Stanfield Farms</p> <p>W/C Bet On Red 481H  GCC Genoa 2118K  JS Black Satin 9B</p> <p>Dameron First Impression  Kenco Impression 190B  Miss CCF Sheza Bandit</p> <p>EPD's CE 9.8 BW 1.8 WW 64.8 YW 98.9 MCE 2.6 MM 21.8 MWW 53.9  This is perhaps the most unique predigreed female we have ever consigned the WV Beef Expo in our decades long history. Sired by the Griswold Cattle standout "Genoa", the legendary JS Black Satin 9B anchors the top side of her pedigree. Her dam, 190B was a Top 10 Overall Female at the AJSA National Classic and remains one of our most attractive cows in production. S16N is moderate framed, deep bodied, has great feet and legs and a quality look from the profile.</p>
<p><b><u>SSF JoJo S10N</u></b> <b><u>Lot 429</u></b></p> <p>Open ¼ SM 15/32 AN 3/16 MA 1/32 CA 1/32 SS 1/32 MX Polled  Heifer  ASA: 4606994 Tattoo: S10N Birth Date: 3/10/25  Consigner: Stanfield Farms</p> <p>GOET I Believe  Getcha Some ET  ASR Dreams Come True 301Z</p> <p>STCC Womack 4042  HPF Empriss 326D  SSF Empriss 302Y</p> <p>EPD's CE 8.3 BW 1.8 WW 55.3 YW 87.9 MCE 2.3 MM 13.3 MWW 40.5</p> <p>S10N stems from one of our top females. Her dam, HPF Empriss 326D, was selected directly from the Hudson Pines Farm program. JoJo is moderate, bold ribbed and deep sided with plenty of width and dimension. At the ground she is big footed, with plenty of bone density. She is first time showman approved and was successfully campaigned to several class wins this past summer.</p>	<p><b>Notes:</b></p>

**Lot 430  
Embryos**

**Selling 3 CLAC Black Satin 151J X STCC Tecumseh IVF Sexed Heifer Embryos**

CLAC Black Satin 151J has been working incredibly hard for us and the Mullooly Family for the past several years with multiple sale highlights across the east coast. Everyone constantly hears the phrase “Power in the Blood” and this female exemplifies just that – Pays to Believe X Boots (Black Satin 9B) is easily one of the most recognizable pedigrees in the country. We have been ecstatic about what her full sisters have done for us and equally as so about the future of this young donor. Black Satin is a unique combination of power, mass, and grace. Being bold and robust about her middle, expressive and powerful in her shape, long and elegant about her look, all while being super sound and fluid about her mobility. She is the type and kind that we strive to promote and to get into production. Black Satin was a multi-time champion across Ohio and West Virginia. She not only achieved banners herself but a Style daughter was Calf Champion at the Ohio State Fair. Other daughters by Style, Relentless and Bet On Red have all been sale toppers. We feel the combination of Black Satin and Tecumseh could produce highly sought after daughters. Selling 3 IVF Heifer Embryos and will guarantee 1 90 day pregnancy if work is done by a Certified Technician.



CLAC Black Satin



Daughter



SALE  
RING  
*.live*



**View lots & bid online by visiting:  
SaleRing.Live**

7th Annual

# Spring Fever Sale

*Hosted By Classic Farms with Guest Consigners*

Simmental and Sim-Influenced and Angus

**April 25th at 1 P.M. Jackson's Mill, Weston, WV**

**Cow/Calf Pairs**

**Bred Heifers**

**Fall Breds**

**Open Heifers**

**Herd Sire Prospects**

**Embryos From Top Genetics**



## CLASSIC FARMS



**JSUL Red Rosie 2403K**



**CLAC Black Satin 151J**

### SPRING SALES

**WV SOUTHERN BULL & HEIFER TEST - MARCH 20TH**  
**WARDENSVILLE BULL TEST MARCH 26TH**  
**PA BULL TEST MARCH 27TH**  
**WV BEEF EXPO APRIL 11TH**  
**SPRING FEVER SALE APRIL 25TH**

Contact us:

Chris & Kellee Brown 304-290-8383

Carter Brown 304-816-6368

Tyler, Phoebe, & Wade Brown 304-290-9419

[classicfarms.net](http://classicfarms.net)



# 2026 BEEF *Spring* SPECIAL

Ask your sales rep about the full list of sires!



**PURSUIT**

~~\$50~~  
\$40

*7AN861 POSS PURSUIT / 20909438 / Gable X Compass*  
PURSUIT sets the standard for multi-trait genetics. He blends all the components to build elite \$M and \$C indexes that fit industry targets.  
Poss Angus, NE



**JUMPSTART**

~~\$30~~  
\$25

*7AR100 BIEBER JUMPSTART / 4463653 / Energize X Trinity*  
JUMPSTART was the 2025 no. 1 Red Angus sire for progeny registrations. He offers phenotype, performance and carcass merit.  
Bieber Red Angus Ranch, SD; Schuler-Olsen Ranches, NE; Twedt Red Angus, ND; Wedel Beef Genetics and Anderson Land and Cattle, KS

SSMC Spring Beef Special runs February 1, 2026 - May 31, 2026. Minimum purchase of 10 units. No broken canes. Special only offered in Kentucky, Missouri, Ohio, and the SSMC territory in Indiana, Western Pennsylvania, and West Virginia. Account must be current. All bulls subject to availability.



Local Beef Specialists:

Jeremy Cantrell, WV, 304-395-1343

Kevin Hinds, OH, 614-205-7173

Office: 614-878-5333 · [www.ssmcoop.com](http://www.ssmcoop.com)

## Ritchie County Polled Hereford Association 42nd Annual Sale

**Friday, April 24th, 2026**  
**at 7:00PM**

Ritchie County 4-H Grounds  
Multi-Purpose Building  
Harrisville, West Virginia

Any questions about the sale or  
to receive a catalog,  
contact Butch Law  
(304) 643-4438





# ALL YOUR LIVESTOCK HANDLING & FARM SUPPLIES IN ONE PLACE!

PROUD SUPPORTERS OF FFA & 4-H  
ACROSS OUR SERVICE AREA, INCLUDING...  
Grant, Hampshire, Hardy, Highland, Mineral,  
Pendleton & Pocahontas Counties



**FEATURING:**



Monterey  
(540)468-2450

Timberville  
(540)896-7017

Visit Us Online  
[www.rockinghamcoop.com](http://www.rockinghamcoop.com)

# 2026 Beef Expo Exclusive



**0%** for **84**  
months

## Select John Deere 5E Series

451E Round Baler



451M Round Baler

**0% for**  
**72 Months**  
on Select John Deere Balers



**“Have A Competitive Model Trade In, Ask Us How To Save More!”**



**MIDDLETOWN**  
TRACTOR SALES

**MAKE YOUR MAIN FACTOR... MIDDLETOWN TRACTOR**

FAIRMONT, WV - 304.366.4690

BUCKHANNON, WV - 304.473.4400

UNIONTOWN, PA - 724.439.1234

WASHINGTON, PA - 724.229.0191

Offer valid on qualifying purchases thru April 30, 2026. 0% Financing on 5E 3 CYL Models Only. Subject to approved credit. A service of John Deere Financial, f.s.b. For consumer use only. Rates subject to change, see local dealer for current rates. Taxes, freight, setup, and delivery charges may increase monthly payment. Prices and models may vary by dealer. Photos may not be actual representations of advertised equipment. Deals on In Stock Balers Only. Limited Stock!

# West Virginia Angus Association

**President**

Robert Reed  
P.O. Box 326  
Mt. Storm, WV  
26739  
304-813-2137

**Vice President**

Rod Summers  
98 Meadland Rd  
Flemington, WV  
26347  
304-842-7958

**Secretary**

Jodi Steadman  
14793 US Hwy 33 W  
Linn, WV  
26384  
304-377-6020

**Treasurer**

Jodi Steadman  
14793 US Hwy 33 W  
Linn, WV  
26384  
304-377-6020

**Reporter**

Mida Peterson  
6581 US Hwy 33E  
Horner, WV  
26372  
304-790-2615

**American Angus Assoc.**

Reese Tuckwiller  
2173 Hens Mill Rd.  
Lewisburg, WV  
24901  
308-360-3048

**Expo Angus Events**

**April 10 @ 11:30 AM**

Annual State Angus Meeting (EEC Building)

**April 10 @ 2:00 PM**

Angus Show @ Cattle Barn - Airstrip

**April 11 @ 1:00 PM**

Angus Sale

**Angus Show/Sale Manager**

**Josh Radabaugh**

270-943-0638

**Sale Day Phones**

John Spiker 304-677-0255

Sale Manager - see above

**Auctioneer**

Col. John Spiker 184-26

Cattle sell under the terms and conditions  
of the American Angus Association [www.angus.org](http://www.angus.org)

If you cannot attend the sale you may enter a bid to the auctioneer or sale  
manager. You may also watch and bid online at [SaleRing.live](http://SaleRing.live)

## Angus Consigners

### Circle R Angus

Josh and Lacey Radabaugh  
1979 Big Run Rd.  
Alma, WV 26320  
270-943-0638  
**Lots: 506, 512**

### C-Squared Cattle Company

Tommy Clark  
14236 Cattle Drive  
Culpeper, VA 22701  
540-937-0029  
**Lots: 504**

### Diamond G Farm

Adam and Sarah Goldizen  
896 Pumpkin Center Rd  
Petersburg, WV 26847  
304-257-0262  
**Lots: 503, 508, 509**

### Towering Oaks Farms

James and Robert Reed  
PO Box 826  
Mount Storm, WV 26739  
304-813-2137  
**Lots: 502, 505, 507**

### Triple C Angus

Kirby and Jennifer Clark  
462 Seneca Way  
Bruceton Mills, WV 26525  
304-288-6644  
**Lots: 510, 511**

### White House Cattle

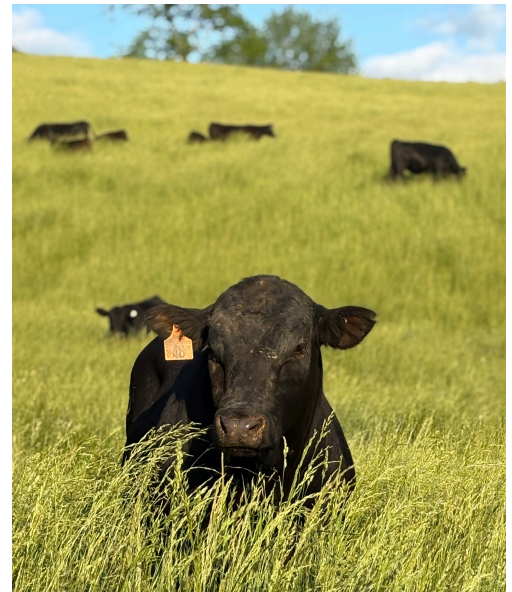
Adam and Casey Hayes  
561 Snider Loop  
Kingwood, WV 26537  
304-685-9523  
**Lots: 501**

### Angus Sale Order:

*Note - All haltered animals sell first*

- 1) Open Heifers in show placed order
- 2) Bulls in show placed order
- 3) Any remaining haltered animals
- 4) Any remaining open or bred heifers
- 5) Spring cow/calf pairs in book/lot order
- 6) Fall cow/calf pairs in book/lot order.

Sale manager reserves the right to change sale order on day of sale.



<b>501</b>	<b>WHC Pride 517</b>	<b>Open HFR</b>
21463709 03/28/2025	Tattoo 517	CED I-2
Consigned by White House Cattle		BW I+3.6
		WW I+56
	SAV Brilliance 8077	YW I+95
PVF Insight 0129	PVF Missie 790	MK I+18
BNWZ Executive Decision 2219	Dameron First Class	MB
CCC Sara's Dream 5116	Silveiras Saras Dream 1339	RE
	Dameron First Class	\$W 32
Colburn Primo 5153	Silveiras Saras Dream 1339	\$F
WHC Pride 17	OSU Currency 8173	\$G
WHC Pride	M B Pride 4012	\$B

I know we took last year off with expo consignments, but we are definitely making up for that this year. A daughter of the past ROV show bull of the year and out of our very best Primo daughter. For those of you that love to stack good families like I do, that's two shots of the dominant Saras Dream 1339. Enjoy this beauty with practical cow size, functionality, and excellent disposition.

<b>502</b>	<b>Towering Oaks Lady 2511</b>	<b>Open HFR</b>
21492421 03/09/2025	Freeze Brand 2511	CED I+10
Consigned by Towering Oaks Farm		BW I+3
		WW I+53
	Connealy Confidence 0100	YW I+97
Connealy Confidence Plus	Elbanna of Conanga 1209	MK I+21
Audley Confidence Plus H298	Basin Payweight 1682	MB
Baldrige Isabel E294	Baldrige Isabel Y69	RE
	Rito 9Q20 of Rita 5F56 GHM	\$W 39
44 Rito 9Q20 6012	VAR Primrose 3044	\$F
Audley Lady F081	Connealy Black Granite	\$G
Audley Miss Granite D020	Audley Total A014	\$B

Towering Oaks Lady 2511 has cow power written all over her. A low BW female that carries some great growth EPDs. Her dam came to us from the great Audley Angus program in Virginia and has done nothing but create to quality progeny. 2511 will be a great addition to any herd.

<b>503</b>	<b>Diamond G Gammer M174</b>	<b>Bred HFR</b>
21462872 10/07/2024	Tattoo M174	CED I+9
Consigned by Diamond G Farm		BW I+2
		WW I+54
	Bushs Moneyball 988	YW I+97
Circle R Moneyball 410	Top Line Queen 0844	MK I+24
Circle R Flash 9472	SAV Pioneer 7301	MB I+37
Circle R Miss Tillie 4725	Circle R Miss Tillie 4072	RE I+44
	Basin Payweight 006S	\$W 53
Basin Payweight 1682	21AR O Lass 7017	\$F 91
Riverbend Gammer E218	Connealy Tobin 8942	\$G 37
Riverbend Gammer A480	Cliff-Bar BCF Gammer 9409	\$B 129

Here is a bred heifer out of our Riverbend Gammer cow who is a powerhouse of a cow and one of the top producing Angus cows in our herd. If you want to see her future, check out 134L pair consigned. Bred to E&B Plus One on 12/13/2025. Vet check confirmed bred.

<b>504</b>	<b>C Squared Barbara 422</b>	<b>Bred HFR</b>
21296514 08/30/2024	Tattoo 422	CED I+5
Consigned by C-Squared Cattle Company		BW I+9
		WW I+64
	Connealy Capitalist 028	YW I+106
LD Capitalist 316	LD Dixie Erica 2053	MK I+32
Musgrave 316 Stunner	MCATL Pure Product 903-55	MB I+51
MCATL Blackbird 831-1378	MCATL Blackbird 1378-573	RE I+43
	HA Future Direction 3540	\$W 72
HA Program 5652	HA Blackcap Lady 2782	\$F 86
Mystic Hill Barbara 1204	Connealy Front Page 0228	\$G 42
Mystic Hill Barbara 757	Mystic Hill Barbara 192	\$B 129

422 is an ET daughter of Stunner and Barbara 1204. This mating has resulted in several outstanding flushmates. 422's dam 1204 produced 12 consecutive fall calves including many standouts. We will miss this one but expect her to make her new owner and us proud. 422 was AI bred to RC Luccase L101 on 11/17/2025 and pasture exposed to Flagship 148 (Reg #21260216) from 12/4/25-2/14/2026.

<b>505</b>	<b>Towering Oaks Rita 2450</b>	<b>Bred HFR</b>
21492422 05/30/2024	Freeze Brand 2450	CED 7
Consigned by Towering Oaks Farm		BW 1.5
		WW 67
	Connealy Confidence 0100	YW 116
Connealy Confidence Plus	Elbanna of Conanga 1209	MK 24
Audley Confidence Plus H298	Basin Payweight 1682	MB
Baldrige Isabel E294	Baldrige Isabel Y69	RE
	Connealy Black Granite	\$W 57
Whitestone Aero 5080	Whitestone Tibbie C055	\$F 91
Towering Oaks Rita 2024	WR Journey-1X74	\$G
Audley Rita D098	Woodside Rita 4416 of 7M68	\$B

Towering Oaks Rita 2450 has cow power written all over her. A low BW female that carries some great growth EPDs. Her granddam came to us from the great Audley Angus program in Virginia and has done nothing but create to quality progeny. 2450 will be a great addition to any herd. Breeding info available sale day.

<b>506</b>	<b>Circle R Laramie 4028</b>	<b>Bull</b>
21279653 11/03/2024	Tattoo 4028	CED -6
Consigned by Circle R Angus		BW 4.1
		WW 61
	SAV Brilliance 8077	YW 108
PVF Insight 0129	PVF Missie 790	MK 14
BNWZ Dignity 8017	Dameron First Class	MB 0.03
CCC Sara's Dream 5116	Silveiras Saras Dream 1339	RE 0.26
	Gambles Hot Rod	\$W 29
Silveiras Style 9303	Silveiras Elba 2520	\$F 101
Circle R Heidi 0283	Gambles Undertaker	\$G 17
Gambles Heidi 9146	Gambles HS Saugahatchee	\$B 118

Here's an opportunity to acquire an outstanding bull prospect! He was named the Reserve Champion Bull at the 2025 WV State Fair, Reserve Senior Bull Calf Champ at the 2025 KILE, and class winner at the 2025 NAILE and 2026 NWSS. This one possesses plenty of eye appeal, mass, and a good set of feet and legs to get around on. Study his pedigree as it's stacked with some outstanding genetics both new and old. Has been genomically tested.

<b>507</b>	<b>Towering Oaks Confidence</b>	<b>Bull</b>
21495820	07/15/2024	Tattoo 2470
Consigned Towering Oaks Farm		CED 10
		BW 0.2
		WW 60
		YW 110
		MK 27
		MB 0.97
		RE 0.55
		\$W 60
		\$F 100
		\$G 64
		\$B 165
<p>Towering Oaks Confidence is a low BW son of the Towering Oaks herd sire Audley Confidence Plus H298. His pedigree stems back to the million dollar valued Baldrige Isabel Y69. His granddam came to us from the great Audley Angus program in Virginia and has done nothing but create quality progeny. Be sure to check him out.</p>		

<b>508</b>	<b>Diamond G Eureka 136L</b>	<b>Spring C/C</b>
21112701	12/09/2023	Tattoo 136L
Consigned Diamond G Farm		CED 16
		BW -0.8
		WW 56
		YW 105
		MK 30
		MB 0.51
		RE 0.87
		\$W 63
		\$F 81
		\$G 52
		\$B 133
<p>Same as our other pair lot, dam of this pair is out of our Circle R Flash 9472 bull. The cow also calved in the middle of the January storm that hit the region, calved outside, unassisted with a heifer calf out of Jindra Acclaim. Calf born 1/30/2026.</p>		

<b>509</b>	<b>Diamond G Gammer 134L</b>	<b>Spring C/C</b>
21112700	11/25/2023	Tattoo 134L
Consigned by Diamond G Farm		CED 9
		BW 0.6
		WW 53
		YW 92
		MK 31
		MB 0.3
		RE 0.68
		\$W 62
		\$F 94
		\$G 39
		\$B 134
<p>If you are in the market to purchase an Angus pair, look no further. Dam of this pair is out of our Circle R Flash 9472 bull who is proven to make daughters. The cow calved in the middle of the January storm that hit the region, calved outside, unassisted with a heifer calf of Jindra Acclaim. Calf born on 1/30/2026.</p>		

<b>510</b>	<b>3C Sofia 461</b>	<b>Fall C/C</b>
20806054	09/21/2022	Tattoo 461
Consigned by Triple C Angus		CED 6
		BW 1
		WW 64
		YW 115
		MK 19
		MB
		RE
		\$W 46
		\$F
		\$G
		\$B
<p>3C Sofia 461 is a unique cow with added eye appeal and performance. She will sell with a bull calf born 11-28-2025 by Circle R Midnight Special (AAA# 20446457). She is currently being pasture exposed to Dameron Glacier 427 (AAA# 21200901).</p>		

<b>511</b>	<b>3C Adele 421</b>	<b>Fall C/C</b>
20186118	01/16/2021	Tattoo 421
Consigned by Triple C Angus		CED 1
		BW 2.2
		WW 62
		YW 104
		MK 14
		MB
		RE
		\$W 38
		\$F
		\$G
		\$B
<p>3C Adele 421 is a bold and feminine female that has produced many great calves for us. She sells with a heifer calf born 11-28-2025 by Circle R Midnight Special (AAA# 20446457). She is currently being pasture exposed to Dameron Glacier 427 (AAA# 21200901).</p>		

<b>512</b>	<b>Circle R Miss Tillie 1473</b>	<b>Fall Bred Cow</b>
20064392	01/04/2021	Tattoo 1473
Consigned by Circle R Angus		CED I+4
		BW I+1.5
		WW I+44
		YW I+80
		MK I+31
		MB I+.32
		RE I+.60
		\$W 43
		\$F 87
		\$G 35
		\$B 123
<p>1473 is a functional kind of cow that's easy going. She was showed successfully as a heifer and was the Junior Heifer Calf Champ at the 2021 WV State Fair. She was AI'd on 12/4/25 to Hummel Argentine and then pasture exposed from 12/13/25 - present to Circle R Midnight Special. She would make a great addition to anyone's herd.</p>		

# HERE FOR West Virginia Cattlemen



Farm Credit has been financing operations like yours for over a century. Together, we can help you keep doing what you love. Give us a call today.

## LOANS FOR:

- Cow/ calf pairs, bulls, replacement heifers, stocker and feeder cattle
- New or upgraded working facilities
- Barns and fences
- Machinery, equipment and vehicles
- Operating expenses
- Land - no acreage limitations
- And much more!



## FARM CREDIT

Loans for  
*Farms, Homes & Land!*

800.919.FARM (3276)

[FarmCreditofVirginias.com](http://FarmCreditofVirginias.com)



 NMLS  
#456965



# Farm Family INSURANCE

*Farm Family Insurance offers farm policies that can include coverage for your livestock, helping protect the animals you work so hard to care for every day.*



**MICHAEL GWINN**  
INSURANCE AGENCY



Lookout, WV  
304-574-0499  
[www.mgwinninsurance.com](http://www.mgwinninsurance.com)



Marlinton, WV  
304-799-6303

Farm Family Insurance (formerly known as American National) is a group of companies writing a broad array of insurance products and services. Products and services may not be available in all states. Terms, conditions and eligibility requirements will apply. Life insurance and annuity products may be underwritten by American National Insurance Company, Galveston, Texas. Property and casualty products and services may be underwritten by American National Property And Casualty Company, headquartered in Springfield, Missouri or Argonaut Insurance Company, headquartered in Chicago, Illinois. Each company is financially responsible only for the products and services it issues.

**Time to sell? AuctionsWork**



**John L. Spiker**

Auctioneer/Agent • WV#184-2

Specializing in:

Farm Land & Machinery

Livestock

John has over 40 years of on farm experience  
and 56 years in the auction business  
"I ♥ the Business"

**Email: [JohnSpiker\\_@yahoo.com](mailto:JohnSpiker_@yahoo.com)**

**Call John at 304-677-0255**



**Ag Wholesale**  
FEED • FERTILIZER • FENCE

**For-Most**  
**Livestock Equipment**

West Virginia Distributor

**Let us help you design your cattle-working system!**

**QLF**<sup>®</sup>

QUALITY LIQUID  
FEEDS

Distributor for  
Central West Virginia

539 US Hwy 33 East | Weston, WV  
[agwholesalellc@yahoo.com](mailto:agwholesalellc@yahoo.com)





304-269-6000



## MAXIMUM GRASS PRODUCTION SUPERIOR CATTLE PERFORMANCE

Broadleaf weed management is a proven way to get more from every acre.

Let Alligare Range & Pasture products help you maximize forage production, control broadleaf weeds, reduce brush encroachment, and improve livestock gains.

 @Alligare.IVM  @Alligare, LLC [Alligare.com](https://www.alligare.com)



**GROW MORE GRASS. GROW MORE POUNDS. GROW MORE PROFIT.**

# WV BEEF EXPO CHAROLAIS SALE

WV BEEF EXPO APRIL 9<sup>TH</sup> -11<sup>TH</sup>

SALE DAY: SATURDAY, APRIL 11, 2026

START TIME: 1:30 PM


**WVU JACKSON'S MILL**
  
 160 Jackson Mill Rd, Weston, WV



PRESIDENT	VICE PRESIDENT	SECRETARY/ TREASURER
<b>James D. Miller</b> 55 New England Ridge RD Washington, WV 26181 (304) 482-7490	<b>Thomas Mouser</b> 3679 Mountaineer RD Philippi, WV 26416 (304) 681-0088	<b>Amy Kile</b> 2015 Kessel RD Fisher, WV 26818 (304) 257-6580

### Consignors:

- Mouser Charolais – Lots 601, 602, 603
- Miller Charolais – Lots 604, 605, 606
- Little Em Cattle Company – Lots 607, 608, 609
- C Squared Cattle Company – Lots 610, 611
- Watson Charolais – Lots 612, 613, 614, 615
  - Kinsey Shriver – Lot 616
  - Hillcrest Farm – Lot 617

AUCTIONEER COL. JOHN L. SPIKER (Lic No. 184-26)

Phone:(304) 677- 0255

## 2026 Consignors:

Arthur Mouser Thomas Mouser Mouser Charolais Farms 2030 Independence Road Independence, WV 26374	(304) 892 – 3991 (304) 614 – 0088	Lots: 601, 602, 603
Jimmy Miller Miller Charolais 55 New England Ridge Road Washington, WV 26181	(304) 482 – 7490	Lots: 604, 605, 606
Amy Kile Allan Kile Lindsey Rinker Little Em Cattle Company 2015 Kessel Road Fisher, WV 26818	(304) 257 – 6580 (304) 851 – 6641 (304) 257 – 3440	Lots: 607, 608, 609
Tommy Clark Will Clark C Squared Cattle Company Culpeper, VA	(540) 937 – 0029 (540) 812 – 6007	Lots: 610, 611
Justin Stewart Watson Charolais 1575 Deerwalk Highway Waverly, WV 26184	(304) 481 – 6430	Lots: 612, 613, 614, 615
Kinsey Shriver 304 Shriver Lane Grafton, WV 26354	(304) 265 – 4435	Lots: 616
Timothy VanReenen Hillcrest Farm 758 Denmar Road Hillsboro, WV 24946	(304) 653 – 4897	Lots: 617

## 601 MCF MS DOMINUS 265 P

OPEN HEIFER Consigned by: Mouser Charolais  
DOB: 04/01/25 Registration #: F1372687

M942161 HCR CENTURION 0210 PLD  
**M972044 FC HCR DOMINUS 2112 PLD**  
F1293829 MISS HCR LEA 0138 PLD

M930804 KEYS POWERMAX 57G  
**F1338610 MCF MS POWERMAX 242 P**  
F1242351 NMCF MS MILESTONE 057 P

CE	BW	WW	YW	MILK	MTL	TSI	PA	100K
10.5	0.5	87	154	29	72	304	NT	Y

She has a feminine look, moderate frame and the EPD package we are looking for in a replacement female, her biggest fault is she was born in April and does not match our calving window.

## 602 MCF KENO 031 TWN P

COW/CALF Consigned by: Mouser Charolais  
DOB: 02/01/21 Registration #: F1311055

M846721 CCC WC RESOURCE 417 P  
**EM930692 CCC COPPERHEAD ROAD 9047 P ET**  
EF1204284 WC KENDALL 5173 P ET

EM809046 LT-WC TEMPLETON 1483 PLD ET  
**EF1180737 TNT KENO'S TEMPEST A55 P ET**  
EF914375 M6 MS 066'S KENO 0226PET

CE	BW	WW	YW	MILK	MTL	TSI	PA	100K
5.9	1.2	59	105	16	46	244	NT	NT

Her granddam was a donor for Wright Charolais. 031 has done a good job on her calving interval. Exposed to MCF INFERNO 222 P.

## 603 MCF MICHELLE 162 P

COW/CALF Consigned by: Mouser Charolais  
DOB: 03/04/22 Registration #: F1325724

M846721 CCC WC RESOURCE 417 P  
**EM930692 CCC COPPERHEAD ROAD 9047 P ET**  
EF1204284 WC KENDALL 5173 P ET

M820210 LT SUNDANCE 2251 PLD  
**F1277536 MCF MS SUNDANCE 1319 P**  
F1087135 MCF MS SAXON 038

CE	BW	WW	YW	MILK	MTL	TSI	PA	100K
11.6	-1.0	66	123	18	51	264	F	Y

Out of a good LT Sundance daughter and our former herd sire Copperhead Road who did a really good job for us. 162 has been a good consistent producer for the past 2 years. Exposed to MCF INFERNO 222 P.

## 604 MC MISS SILVER PATRIOT M84J

COW/CALF Consigned by: Miller Charolais  
DOB: 03/26/24 Registration #: F1354924

M852822 LT PATRIOT 4004 PLD  
**M974811 JIM PATRIOT K08J**  
F1264202 JIM OLIVIA MOO-COW F18J

M881925 JIM FREE LUNCH D17J  
**F1312056 JIM MISS SILVER LUNCH J21J**  
F1227055 JIM MISS SILVER DISTANCE D15J

CE	BW	WW	YW	MILK	MTL	TSI	PA	100K
12.1	-4.1	58	92	34	63	240	F	y

AI bred 6-1-25 to Raile Sovereign  
Pasture exposed to Little Em Anthem Storm  
PA Free

## 605 JIM MISS PATRIOT WRANGLER M83J

COW/CALF Consigned by: Miller Charolais  
DOB: 03/11/24 Registration #: F1354889

M791626 LT LEDGER 0332 P  
M852822 LT PATRIOT 4004 PLD  
F1161464 LK MISS RIO 2119

M850636 JIM WRANGLER B13J  
F1264196 JIM MISS FREE WRANGLER F30J  
F1209044 JIM MISS FREE LUNCH C13J

CE	BW	WW	YW	MILK	MTL	TSI	PA	100K
12.7	-1.9	73	140	30	67	289	F	Y

AI bred on 6-1-25 to LT Countdown  
Pasture exposed to Little Em Anthem Storm  
PA Free  
Homo Polled

## 606 55M SAYLOR 91J

COW/CALF Consigned by: Miller Charolais  
DOB: 04/05/24 Registration #: F1354899

M852822 LT PATRIOT 4004 PLD  
M974811 JIM PATRIOT K08J  
F1264202 JIM OLIVIA MOO-COW F18J

M808527 RAILE SOVEREIGN J827 Y064  
F1280696 JIM MISS HAZEL G33J  
F1245790 JIM MISS SILVER WRANGLER E36J

CE	BW	WW	YW	MILK	MTL	TSI	PA	100K
9.9	0.2	76	139	31	69	265	F	Y

AI bred 6-1-25 to LT Countdown  
Pasture exposed to Little Em Anthem Storm  
PA Free  
Homo Polled

## 607 LITTLE EM BLUE COLLAR BELLA

OPEN HEIFER Consigned by: LITTLE EM CATTLE COMPANY  
DOB: 03/18/25 Registration #: F1368998

M875188 ABRJ NEW HANK 595 P  
M964567 LCOC BLUE COLLAR P004J  
F1239155 LCOC PERFORM DP041

EM790987 TR PZC MR TURTON 0794 ET  
EF1236388 WCC LOOK MY WAY ET  
EF1046486 TR MS GRID 6752S ET

CE	BW	WW	YW	MILK	MTL	TSI	PA	100K
13.8	-1.4	61	131	22	52	283	C	Y

Sired by LCOC Blue Collar P004J, our herd sire, co-owned with Leachman Cattle of Colorado and Testerman Charolais. His dam was the highest selling female at the Leachman fall roundup sale. His ½ sib brother was the highest selling bull in the same sale. Blue Collar adds dept, muscle, and gain. Her dam is a proven female from Thomas Ranch. She has consistently given us a powerful calf each year.

## 608 LITTLE EM GAME TIME DUSTY

OPEN HEIFER Consigned by: LITTLE EM CATTLE COMPANY  
DOB: 04/28/25 Registration #: F1369004

M943448 LEACHMAN MSF GAME TIME P046H  
M986880 MSF GAME TIME P046L  
F1260983 MSF FIRE FP030

M850636 JIM WRANGLER B13J  
F1264189 JIM MISS STATE WRANGLER F19J  
F1191511 JIM MISS ALL STATE B06J

CE	BW	WW	YW	MILK	MTL	TSI	PA	100K
12.8	-2.5	58	106	7	37	249	F	Y

Sired by MSF Game Time P046L from Meinders Stock Farm in Iowa. Her grand sire is Leachman MSF Game Time P046H specialized in calving ease and growth while maintaining an attractive look with body, middle mass, and shape. Her dam us a Wrangler daughter with proven calving ease and a very stout profile.

## 609 LITTLE EM BLUE COLLAR ELLIS

OPEN HEIFER Consigned by: LITTLE EM CATTLE COMPANY  
DOB: 03/31/25 Registration #: F1369001

M875188 ABJR NEW HANK 595 P  
**M964567 LCOC BLUE COLLAR P004J**  
F1239155 LCOC PERFORM DP041

EM898286 LT INCEPTION 7456 PLD ET  
**EF1338059 HF MS SMOKING 2372 ET**  
F1111842 DS MISS JOE THROTTLE 832

CE	BW	WW	YW	MILK	MTL	TSI	PA	100K
8.1	0.0	66	131	13	46	282	F	Y

Her dam was purchased from the LG Herdon JR Farm, Lyons, GA and sired by LT Inception. LT Inception is a multiple trait leader who exceeds in performance through weaning and yearling while adding maternal value.

## 610 C 2 DUTCHESS 2301

BRED HEIFER Consigned by: C SQUARED CATTLE COMPANY  
DOB: 01/27/23 Registration #: F1362388

M760665 LT RUSHMORE 8060 PLD  
**EM934097 DESCO SIR RUSHMORE 901 P**  
F1061848 WCR MS DUKE 6025 P/S

EM831973 HCR LEDGER 2509 PLD  
**F1297784 C2 BLUE RIDGE DUTCHESS 905**  
F1273111 WRC BLUE RIDGE DUTCHESS 610

CE	BW	WW	YW	MILK	MTL	TSI	PA	100K
11.4	-1.3	70	116	28	63	261	F	Y

Very hard to find in the Charolais breed. She is big bodied and deep flanked with genuine muscle shape. She has an extended and attractive neck and head. She has a moderate birthweight, high growth, and high milk. 2301 is one of the most docile cows we have today, making her as easy in the working pens as she is on the eyes. She is bred to calve this spring to Tankfull K92, a bull that is making the big producers pay attention. Homo polled.

## 611 C 2 VANITY 2330

BRED HEIFER Consigned by: C SQUARED CATTLE COMPANY  
DOB: 08/30/23 Registration #: F1354031

M880381 LT AFFINITY 6221 PLD  
**M939133 CMF EXCLUSIVE 137G**  
F1232715 CMF 25A WINDY 85D

EM799353 FINK GOLD STANDARD 0153  
**F1273042 FINK VANITY 8927 0292 GS**  
EF1135369 FINK VANITY 0292 7778 BG

CE	BW	WW	YW	MILK	MTL	TSI	PA	100K
12.3	-0.3	82	157	28	69	308	F	Y

## 612 WCF MAIZY IN CHARGE

OPEN HEIFER Consigned by: WATSON CHAROLAIS  
DOB: 03/12/25 Registration #: F1377862

M863378 KNS CINCH UP 13C  
**M943100 SFC GUNNER**  
F1179526 SFC MS FIREMAKER

M914390 SFC MR NITROUS  
**F1298456 SFC MISS RITA**  
F1264257 SFC MISS SOPHIA

CE	BW	WW	YW	MILK	MTL	TSI	PA	100K
9.0	-0.2	60	101	24	55	252		

## 613 WCF PEARLS SHINY PENNY

OPEN HEIFER Consigned by: WATSON CHAROLAIS  
DOB: 03/12/25 Registration #: F1377861

M852822 LT PATRIOT 4004 PLD  
**M943509 LT ATLAS 0251 PLD**  
F1245909 LT MOLLY 7031 PLD

M943100 SFC GUNNER  
**F1336681 WCF MISS ELLIES PEARL**  
F1298456 SFC MISS RITA

CE	BW	WW	YW	MILK	MTL	TSI	PA	100K
13.7	-3.2	66	119	28	61	281		

## 614 WCF ANNIE UP

OPEN HEIFER Consigned by: WATSON CHAROLAIS  
DOB: 03/10/25 Registration #: F1377860

M852822 LT PATRIOT 4004 PLD  
**M943509 LT ATLAS 0251 PLD**  
F1245909 LT MOLLY 7031 PLD

M943100 SFC GUNNER  
**F1336680 WCF MISS AMELIAS OPAL**  
F1204640 FC LADY IN WHITE

CE	BW	WW	YW	MILK	MTL	TSI	PA	100K
13.8	-3.3	67	123	27	61	286		

## 615 WCF GEORGE G. WATSON

BULL Consigned by: WATSON CHAROLAIS  
DOB: 04/14/25 Registration #: M1019055

M863378 KNS CINCH UP 13C  
**M943100 SFC GUNNER**  
F1179526 SFC MS FIREMAKER

EM829826 FC REMINGTON  
**F1204640 FC LADY IN WHITE**  
EF1167263 FC LEXUS

CE	BW	WW	YW	MILK	MTL	TSI	PA	100K
9.4	-0.3	62	108	23	54	261		

## 616 SF KAS COCO 184

BRED HEIFER Consigned by: KINSEY SHRIVER  
DOB: 02/25/24 Registration #: F1357601

M760665 LT RUSHMORE 8060 PLD  
**M948522 CCC PROBITY 9506 P**  
EF1243916 WC CCC SWEETHEART 6644 P ET

M818462 EC FOREFRONT 8066 PLD  
**F1306308 SF KAS IVORY 20**  
F1264255 SFC MISS THELMA

CE	BW	WW	YW	MILK	MTL	TSI	PA	100K
12.7	-1.1	71	105	23	59	242	F	Y

D Probity is siring the high sellers at Cody Cattle Company in Kansas. This heifer has a calm disposition. Due to calve this fall, updated breeding information will be available at the Expo.

# 617 HC AUGUSTINE N801

OPEN HEIFER Consigned by: Hillcrest Farm  
DOB: 03/01/25 Registration #: F1370456

M814791 SPARROWS SANCHEZ 715T

**M814790 CML RAZR 7Y**

PEFC340486 TARGET PLD GINNY 40P

EM767555 CMC SMOKE SIGNAL 812 ET

**F1267976 HC SOUTHERN GIRL E925**

F1212856 HC SOUTHERN BELLE B604 PLD

CE	BW	WW	YW	MILK	MTL	TSI	PA	100K
3.4	3.0	61	97	21	52	230		



## A Study in Modern-Day Yield Value



In today's beef industry, every segment is required to do more with less. Given an increase in finished weights at harvest industry-wide and the need to meet higher efficiencies, Charolais genetics represent a superior choice for beef producers and industry stakeholders seeking to maximize carcass value. This analysis demonstrates that Charolais cattle consistently outperform Angus in both boxed beef and retail cutout values, offering significant financial advantages at every stage of the beef supply chain. With Charolais, the beef industry can expect increased yield and profit driven by enhanced yields in high-value cuts like ribeye, strip loin, and tenderloin. Whether you're a packer, retailer, or cattle breeder, incorporating Charolais genetics into your operation can lead to a direct boost in profitability, ensuring you're not only meeting market demand but also leading it.

*AICA Charolais USA - American International Charolais Association. AICA. (n.d.).  
<https://charolaisusa.com/>*

# MAKE HAY THE VERMEER WAY.

## MOW IT

- Disc mowers
- Trailed mowers
- Mower conditioners



## DRY IT

- Tedders



## RAKE IT

- Twin basket rakes
- Wheel rakes
- Rotary rake



## BALE IT

- Round dry hay balers
- Round silage balers
- Self-propelled baler



## PACKAGE IT

- Vermeer® Net



## WRAP IT

- Inline bale wrapper
- Single bale wrappers



## FEED IT

- Bale processors
- TMR mixers
- Feed wagons



**Forage  
 innovations  
 for your cattle  
 operation.**

Vermeer, the Vermeer logo and the Black, White, Green bale wrap color scheme (Vermeer Net) are trademarks of Vermeer Manufacturing Company in the U.S. and/or other countries.  
 © 2020 Vermeer Corporation. All Rights Reserved.

**King & Sons LLC**  
 420 Rumbling Ln, Morgantown,  
 WV 26508  
 (304) 296-0180



## **BEEF CHECKOFF**

### **2019-2023 RETURN ON INVESTMENT STUDY**

**WITHOUT THE NATIONAL BEEF CHECKOFF,  
DOMESTIC BEEF DEMAND WOULD  
HAVE BEEN 2.4 BILLION  
POUNDS (8.5%) LOWER  
AND STEER PRICES WOULD  
HAVE BEEN 7.8% LOWER  
PER YEAR FROM 2019-2023.**

For every \$1 invested in national Beef Checkoff demand-driving activities in the five-year period, the program resulted in a **TOTAL FINANCIAL IMPACT OF \$13.41** back to the producers and importers who pay into the program.



**ONLINE ACCESS**

For more information, visit  
[BeefBoard.org/ROIstudy](https://BeefBoard.org/ROIstudy).



Funded by the Beef Checkoff



# JOIN OUR *Market Bulletin List!*

Subscribe to the WVDA Market Bulletin to get the latest news and updates.

[marketbulletin@wvda.us](mailto:marketbulletin@wvda.us) or 304-558-3708

Both electronic and print subscriptions available!

# Shop Local

# Support

Shopping local ensures you are supporting West Virginia's economy while creating a richer, more robust and resilient food chain for all.

To view the 2026 WV Grown Directory, scan the QR code.



📞 304-558-2210  
✉ [wvgrown@wvda.us](mailto:wvgrown@wvda.us)  
🌐 [www.agriculture.wv.gov](http://www.agriculture.wv.gov)



# Ready to show your competitive edge at the Beef Expo?

## Photo Contest

Adult (18+) & Youth (9-18) divisions with 5 categories:

- Beef Cattle, Farm Landscapes, People in Farm Related Activities, Other Animals Around the Farm, Black & White

Photos due March 30 to Krista Hayes, 153 Gnegy Church Rd., Eglon, WV 26716



## Stockman's Contest

- Open to youth 8-18, as of Jan. 1, 2026
- Must register by April 1
- Contact your Extension Agent or FFA advisor if interested in competing!
- Topics include: cattle evaluation, feeder cattle grading, plants, meats, breeds, industry knowledge, and hay evaluation

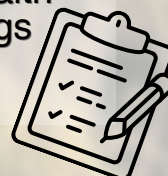
April 10, 11 a.m.



## Youth Cattle Working Contest

- Open to youth 14-18 years old
- Must be a team of 3 that has completed BQA certification
- Teams will complete a cattle processing plan, then properly move cattle through a handling facility and administer health products such as vaccines, implants, dewormers, and tags

April 10, 2:30 p.m.



# Index to Advertisers

*A special thank you to the following who chose to advertise their operation or products in this catalog*

Ag Wholesale .....	51	Pleasant View Farm .....	Inside Front Cover
Allegheny Veterinary Service .....	14	Ritchie County Polled Hereford Association .....	42
Alligare .....	52	Rockingham Cooperative .....	43
Cedar Hill Farm .....	21	Select Sires-Member Cooperative .....	42
Classic Farms .....	41	Southern States .....	<i>Inside Back Cover</i>
Dayton Cattle .....	23	Switzerland of Ohio Polled Hereford Assoc .....	14
Farm Credit of the Virginias .....	49	Todd Belcher Insurance .....	16
Farm Family Insurance .....	50	Ward Farm Supply .....	30
Freedom Ag & Energy .....	15	WV Angus Association .....	45
Grazing Professionals .....	32	WV Beef Industry Council .....	61
King & Sons, LLC .....	60	WV Cattleman's Association .....	4
John Spiker .....	51	WV Charolais Association .....	53
Locke Wysong, Farm Family Ins. ....	28	WV Department of Agriculture .....	62
Long Stone Farm .....	25	WV Limousin Breeders Association .....	5
Middletown Tractor .....	44	WV Red Angus Association .....	17
Mossy Wind Supply .....	16	WV Simmental Association .....	33
Oakley Cattle .....	29		

*Thank you to our trade show exhibitors as well. We hope those attending benefit from the **36th West Virginia Beef Expo.***





# WE ARE YOUR LIVESTOCK HEADQUARTERS



## QUALITY SUPPLIES & SERVICES

*From Trusted Brands*

4 RIVERS CATTLE EQUIPMENT • MADISON WOOD FENCING SOLUTIONS • STAY TUFF FENCING PASTURE MANAGEMENT • ADVANCED AG PRODUCTS VIGORTONE MINERALS • ANIMAL HEALTH SOLUTIONS AURORA PHARMACEUTICALS • ENERGY SOLUTIONS, PROPANE AND DIESEL FUEL AND MUCH MORE!



### VISIT ONE OF OUR CONVENIENT LOCATIONS:

1200 S. Davis Ave., Elkins, WV 26241 • 567 S. Main St., Moorefield, WV 26836 • 42 Depot St., Philippi, WV 26416 • 222 N. Mildred St., Ranson, WV 25438  
25108 Northwestern Turnpike, Romney, WV 26757 • 44 Service Rd., Summersville, WV 26651 • 885 Roanoke St., Christiansburg, VA 24073 • 201 Williams St., Luray, VA 22835

**SOUTHERNSTATES.COM**



**WV Cattlemen's Association**

62 Farm Bureau Rd.  
Buckhannon, WV 26201

